

Appendix A: Supporting Information

Table A1. Household characteristics, assets, and income, San Jose, 1994/95 and 2007.

	1994/95		2007	
	(1)		(2)	
Year of household formation	1976	(13.3)	1983	(16.2)
Initial land holdings (hectares)	4.4	(4.9)	3.9	(4.4)
Household characteristics:				
Age of household head (years)	41.5	(13.5)	46.6	(14.3)
Household size	5.6	(2.7)	4.6	(2.0)
Household assets:				
Land holdings (hectares)	6.7	(5.4)	7.7	(4.5)
% Upland ¹	74%		63%	
% Floodplain ¹	13%		24%	
% Terrace ¹	13%		12%	
Non-land assets (US\$) ²	108	(151)	174	(246)
Household upland use:				
% Cropping ³	11%		12%	
% Orchard ³	38%		25%	
% Fallow ³	51%		63%	
Orchard age (years) ⁴	18.7	(8.8)	9.3	(5.2)
Fallow duration (years) ⁴	11.7	(4.6)	14.7	(10.1)
Household income:				
Income (US\$)	3195	(1852)	4416	(2252)
Crop	61%		22%	
Fishing	9%		38%	
Charcoal	17%		26%	
Other ⁵	14%		14%	
No. observations	32		48	
No. observations (income)	19		24	

¹Former pasture as another land type is not shown.

²n=19 in 1994/95, n=46 in 2007

³Unknown land use is ignored.

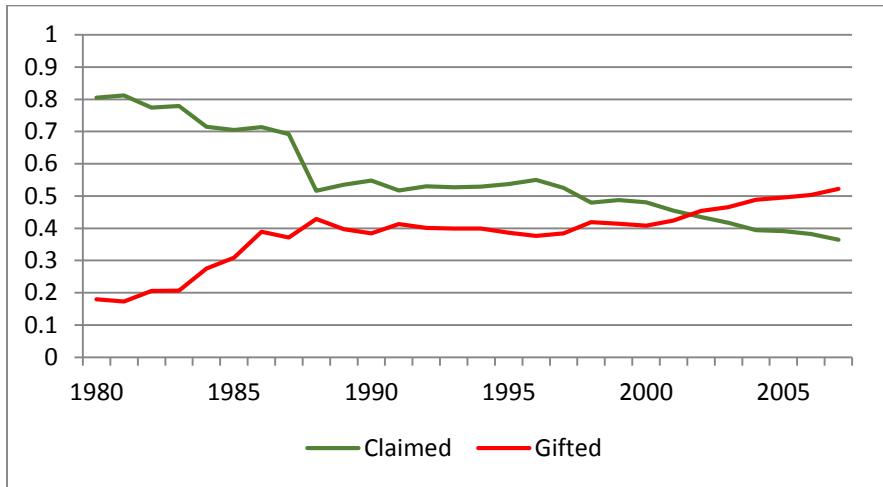
⁴Based on plots with complete land cover history using plot size as weights. No. of observations vary.

⁵Other income includes handicrafts, hunting, livestock, wage labor, non-timber forest extraction, and shop.

Notes - Household means are shown. Standard deviations are in parentheses. 3.13 Sole/USD(2007).

Figure A1.1. Gini decomposition by mode of land acquisition for all lands (A) and upland only (B), 1980-2007.

A. All lands



B. Upland

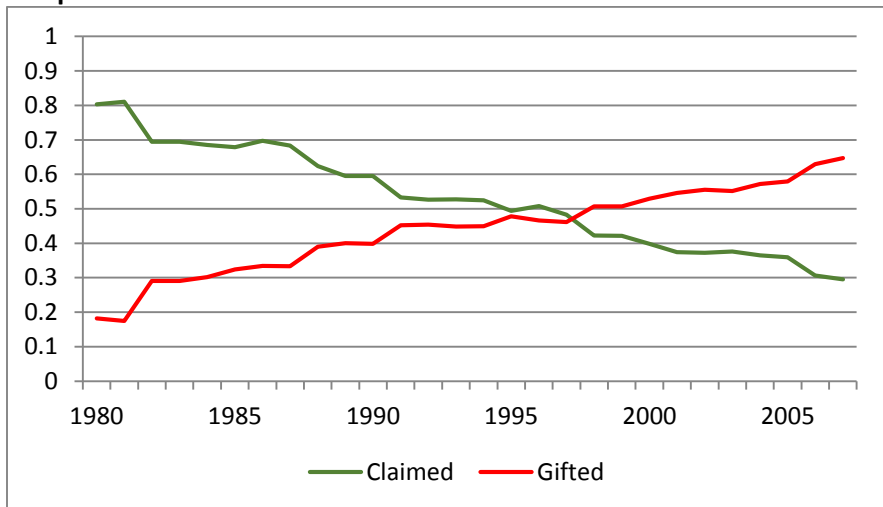
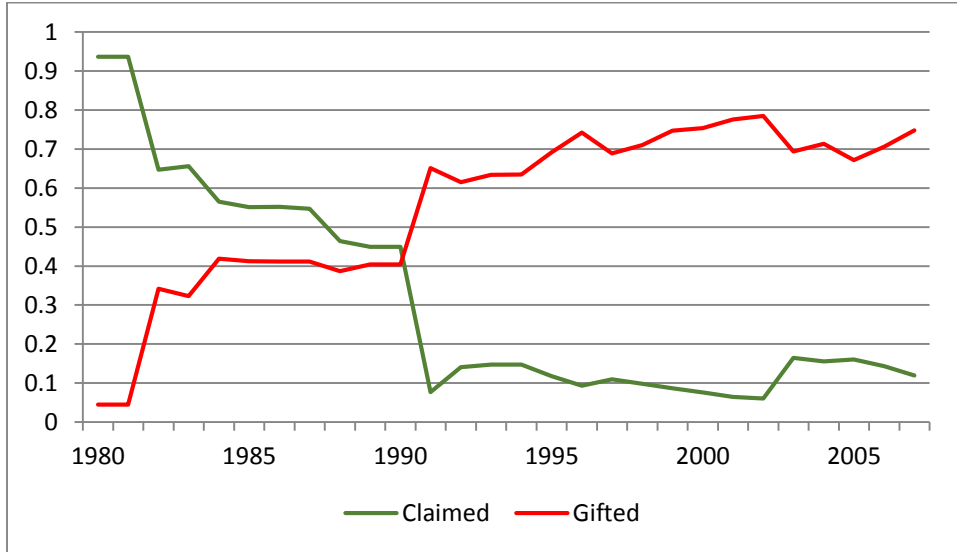


Figure A1.2. Gini decomposition by mode of acquisition of upland fallows and orchards, 1980-2007.

A. Fallows



B. Orchards

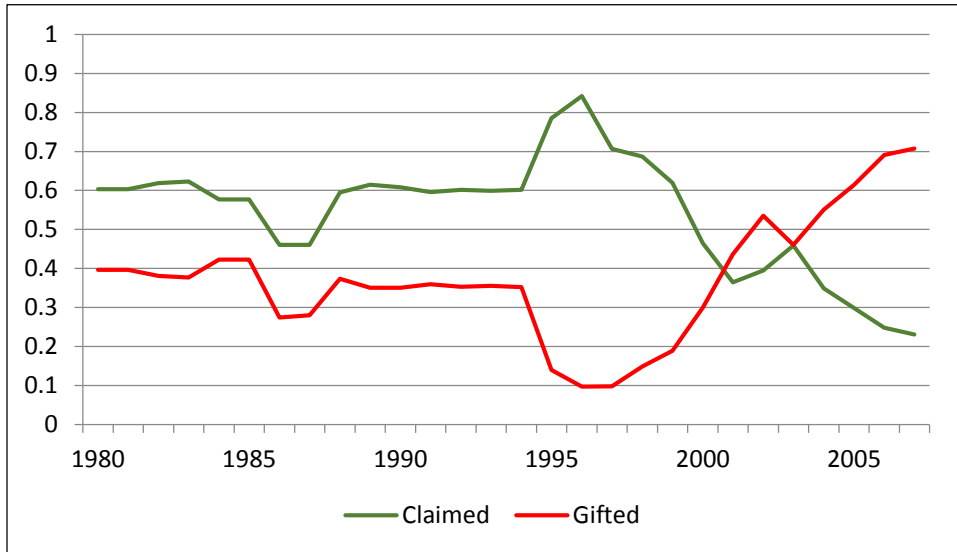
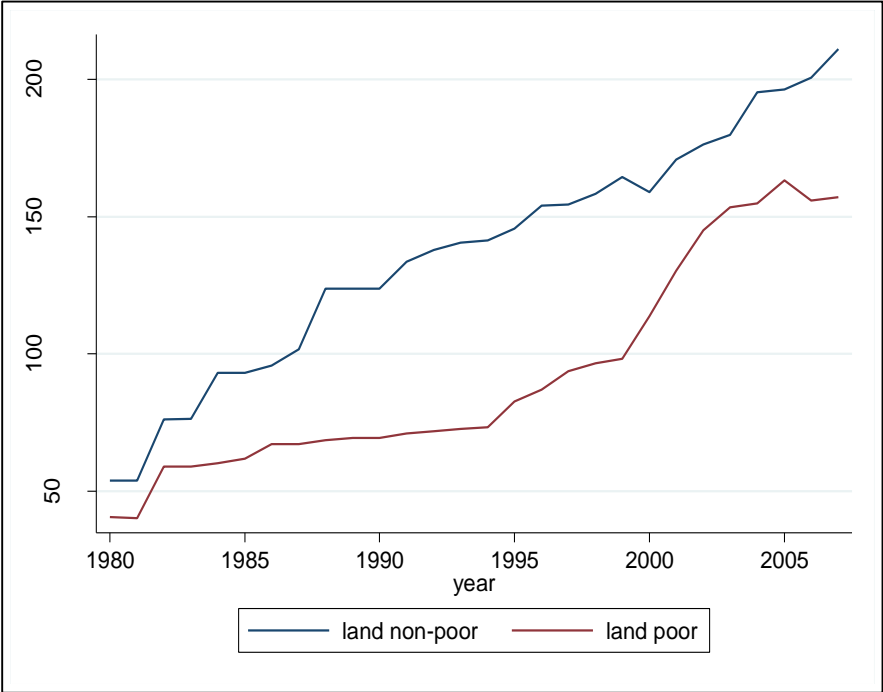


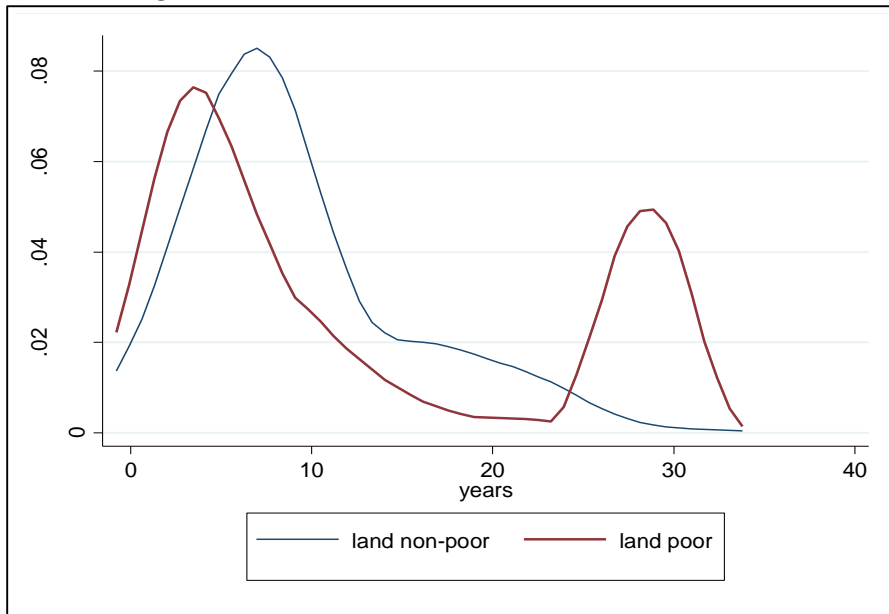
Figure A1.3. Total land holdings by household initial land endowment, San Jose 1980-2007.



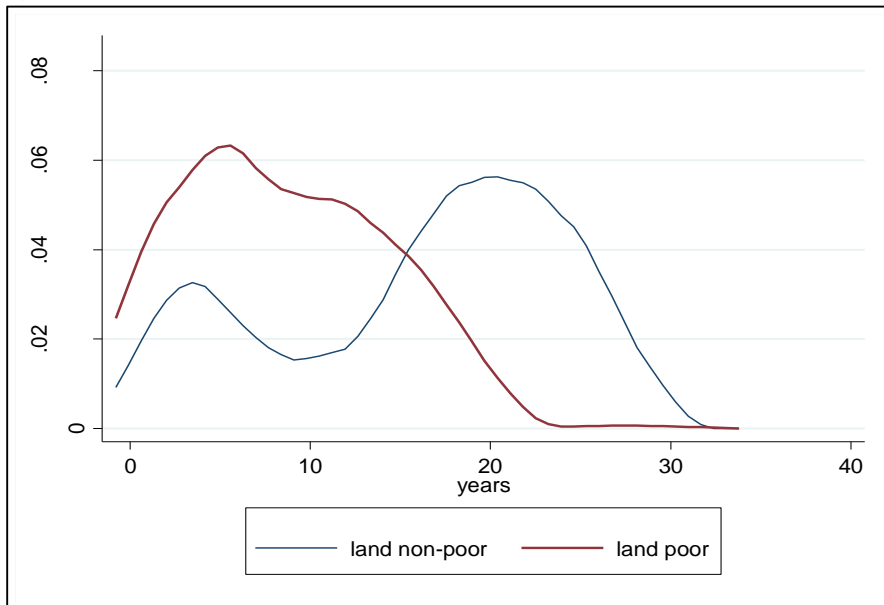
Notes: The median initial land holding was used as the fixed breakpoint between initial poor and nonpoor households in lieu of a natural breakpoint in the data. Initial land holdings at the time of household formation are used to define initially land poor/nonpoor households.

Figure A1.4. Nonparametric density estimates for orchard age and fallow duration for initial land non-poor and poor households, San Jose, 1995-2007.

A) Orchard age



B) Fallow duration



Notes: The median initial land holding was used as the fixed breakpoint between initial poor and non-poor households in lieu of a natural breakpoint in the data. Initial land holdings at the time of household formation are used to define initially land poor/non-poor households.