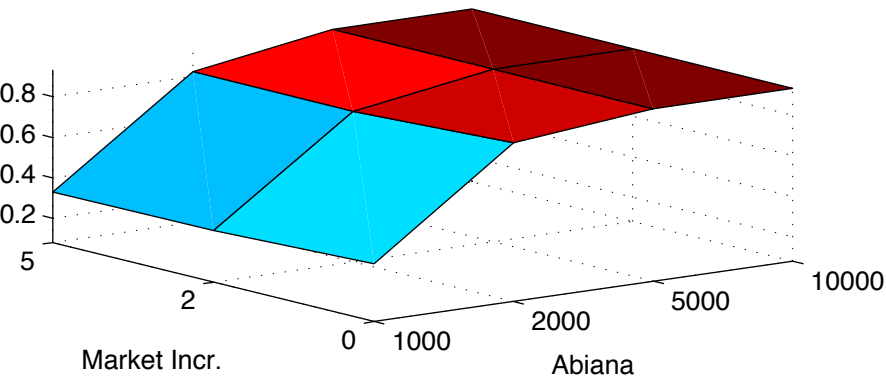
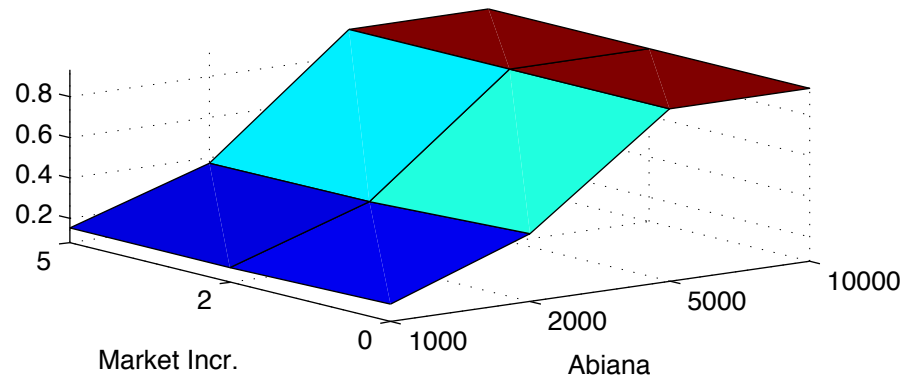


Appendix 2. Inlet Maintenance – Number of Channels 1, with 24 Farms per channel

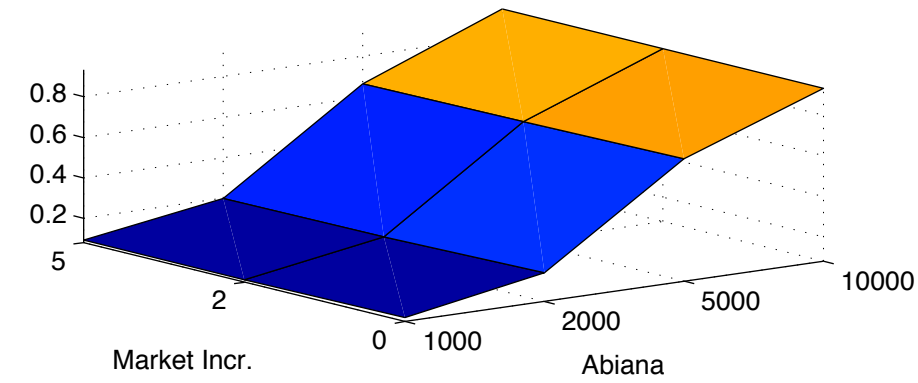
Inlet Costs 200000, Local Costs 200000



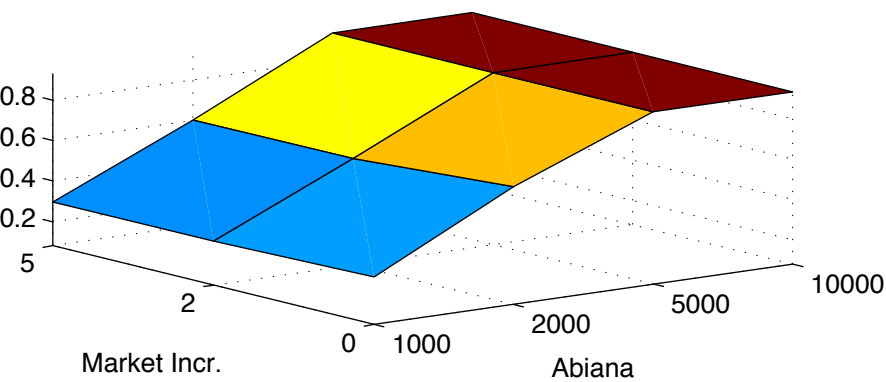
Inlet Costs 500000, Local Costs 200000



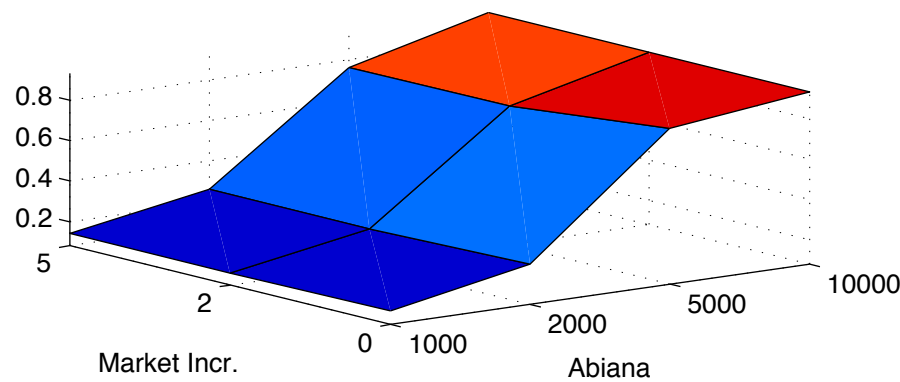
Inlet Costs 1000000, Local Costs 200000



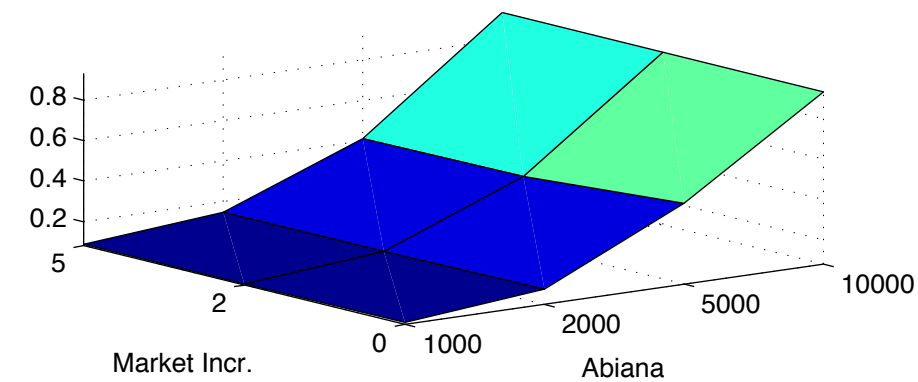
Inlet Costs 200000, Local Costs 500000



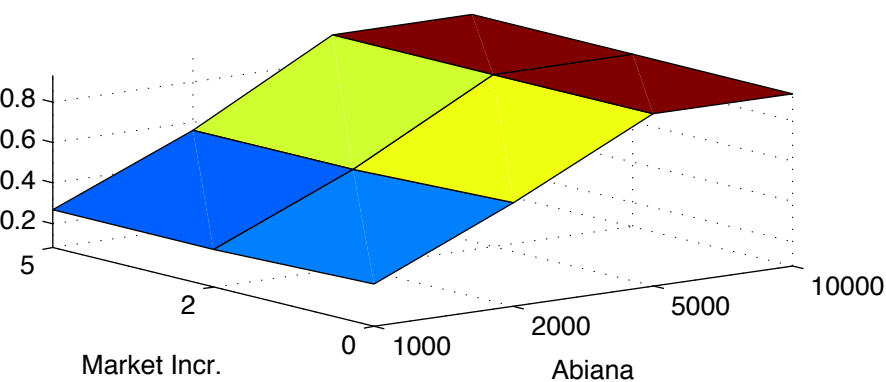
Inlet Costs 500000, Local Costs 500000



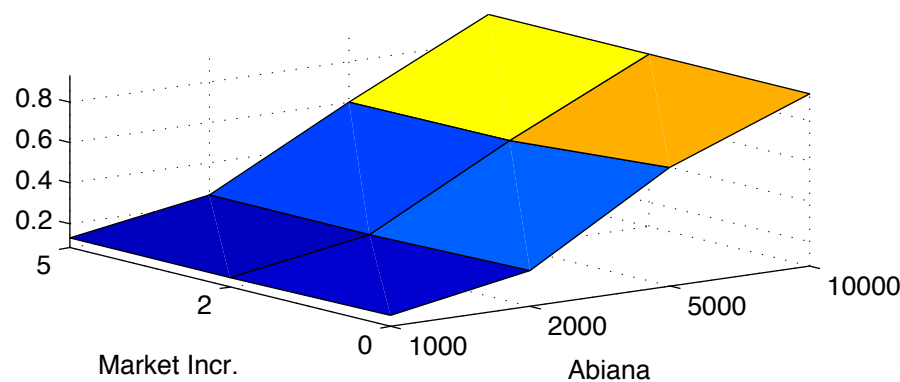
Inlet Costs 1000000, Local Costs 500000



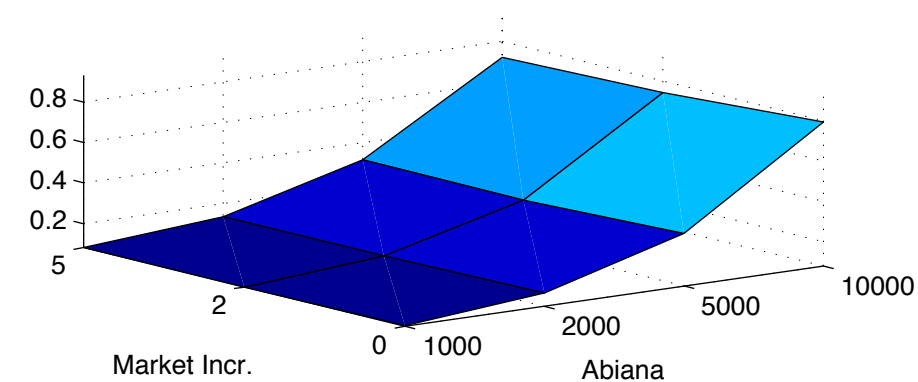
Inlet Costs 200000, Local Costs 1000000



Inlet Costs 500000, Local Costs 1000000

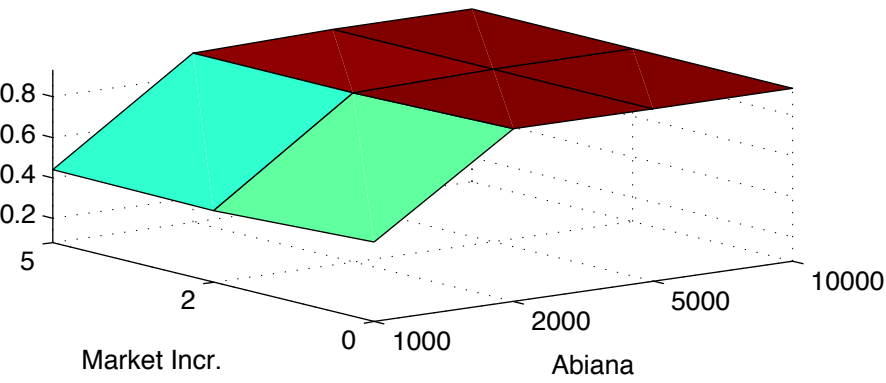


Inlet Costs 1000000, Local Costs 1000000

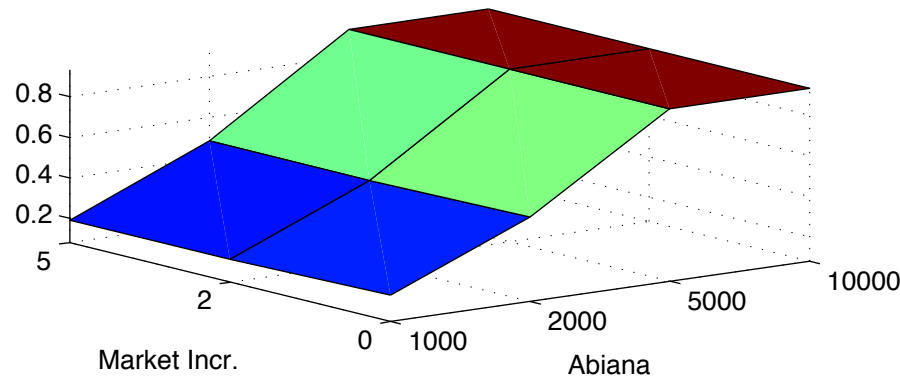


Inlet Maintenance – Number of Channels 2, with 12 Farms per channel

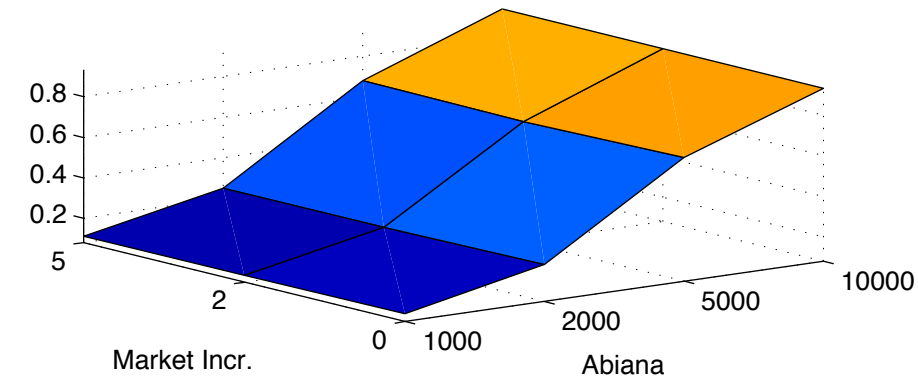
Inlet Costs 200000, Local Costs 200000



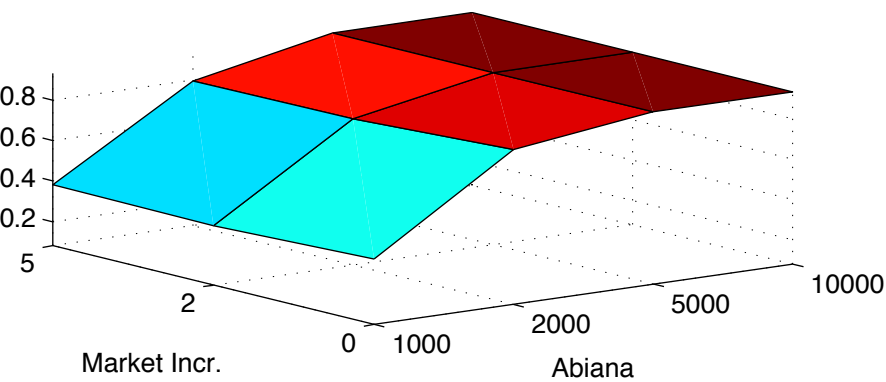
Inlet Costs 500000, Local Costs 200000



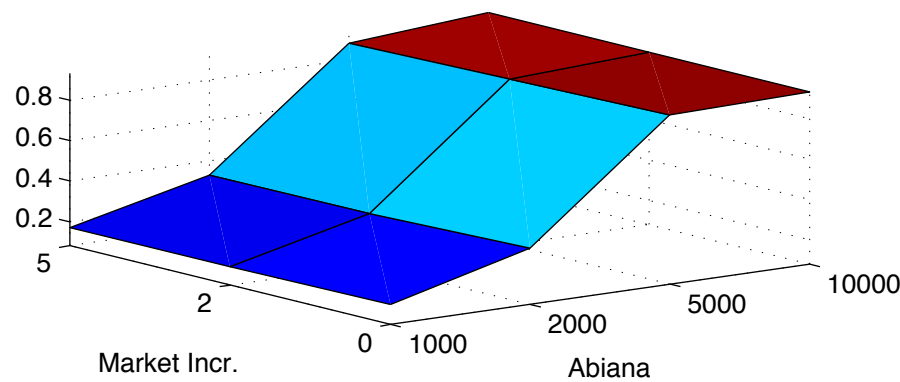
Inlet Costs 1000000, Local Costs 200000



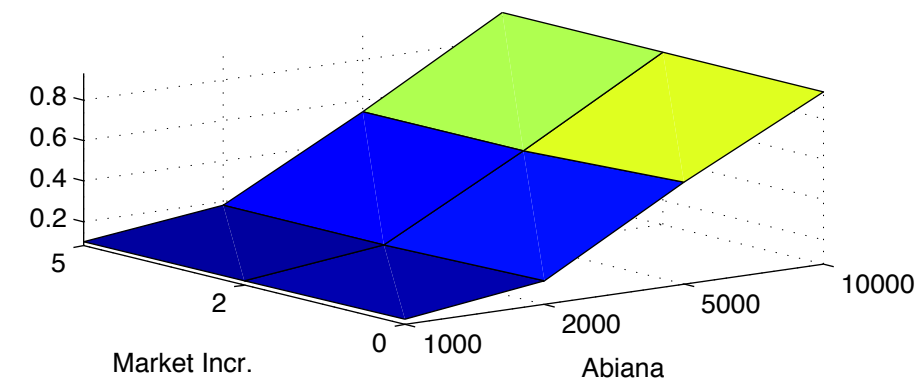
Inlet Costs 200000, Local Costs 500000



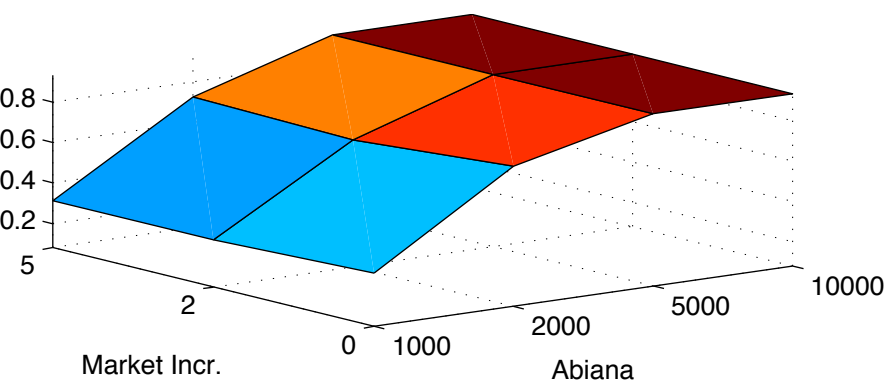
Inlet Costs 500000, Local Costs 500000



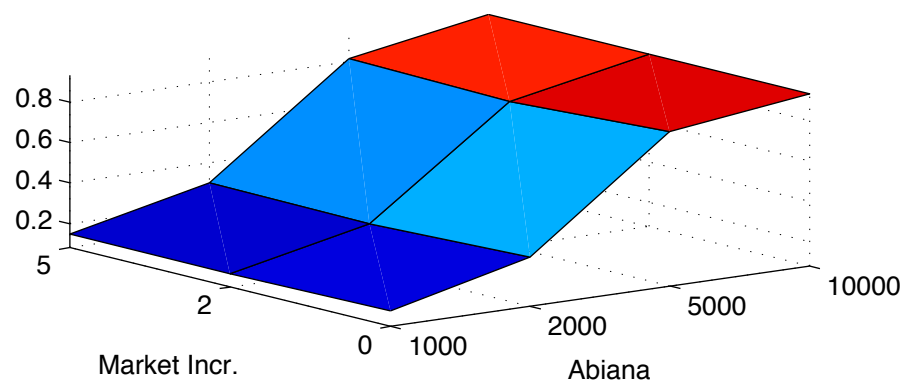
Inlet Costs 1000000, Local Costs 500000



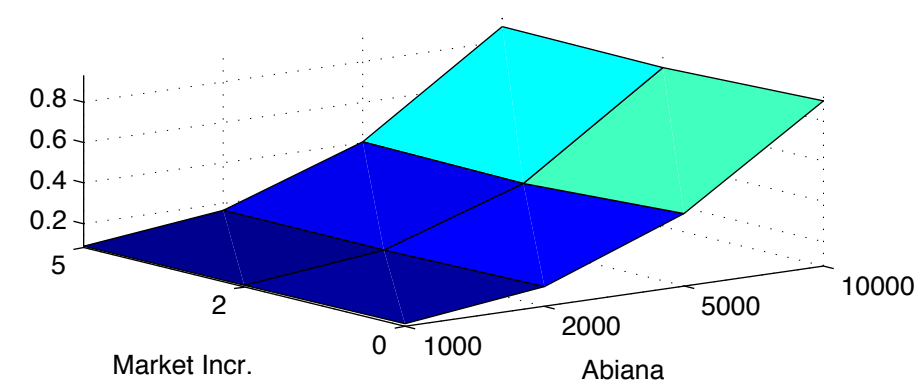
Inlet Costs 200000, Local Costs 1000000



Inlet Costs 500000, Local Costs 1000000

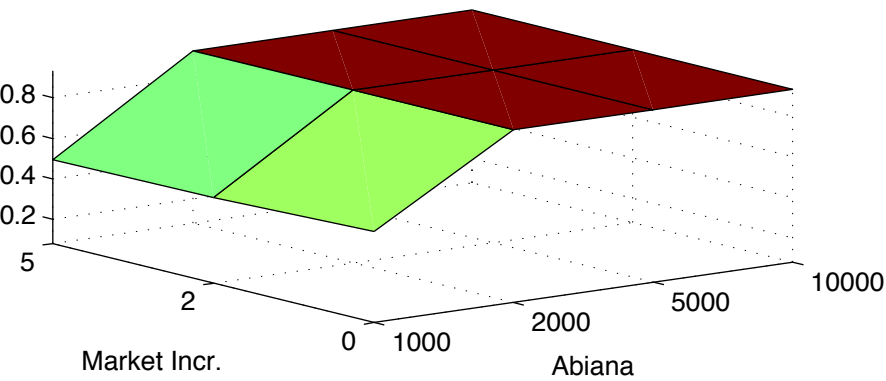


Inlet Costs 1000000, Local Costs 1000000

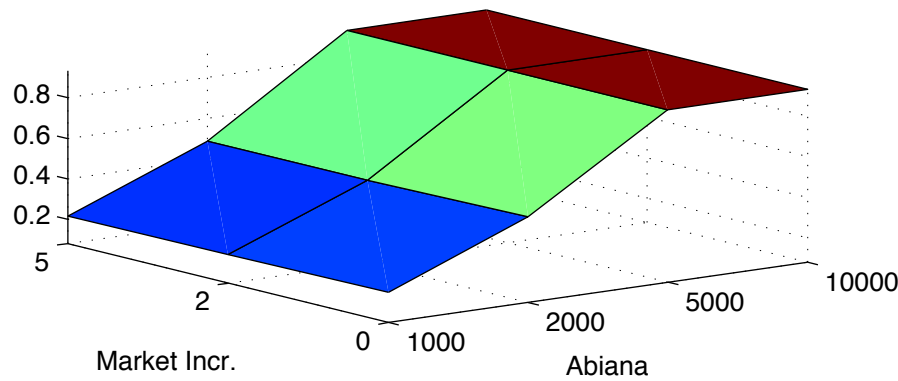


Inlet Maintenance – Number of Channels 3, with 8 Farms per channel

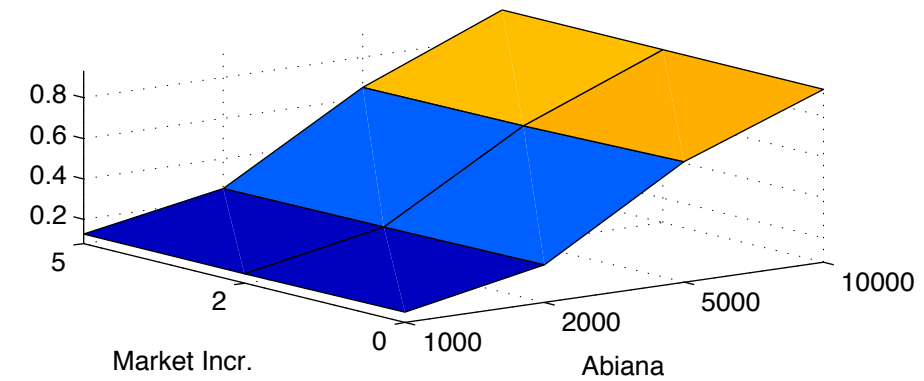
Inlet Costs 200000, Local Costs 200000



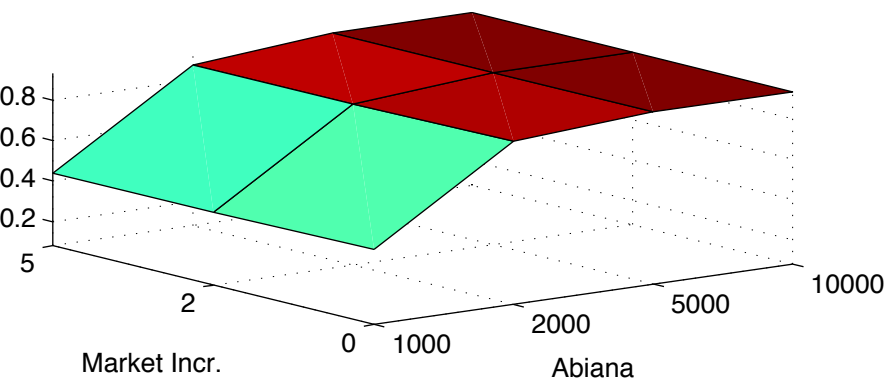
Inlet Costs 500000, Local Costs 200000



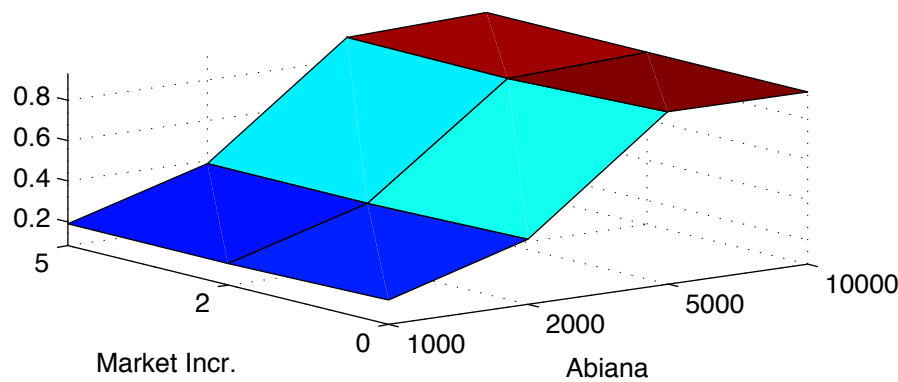
Inlet Costs 1000000, Local Costs 200000



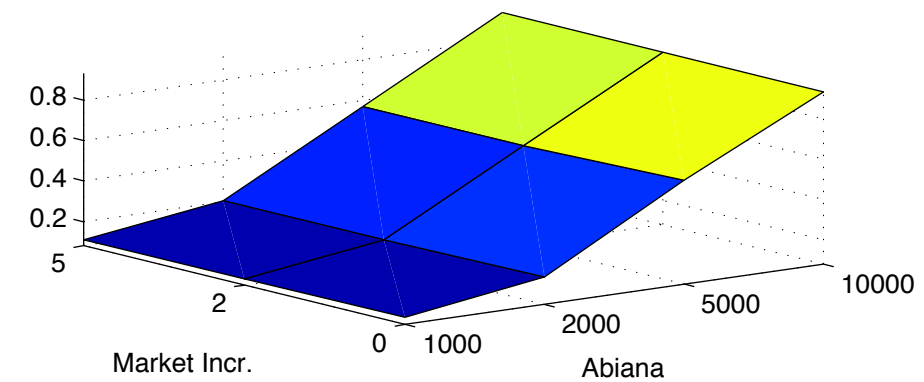
Inlet Costs 200000, Local Costs 500000



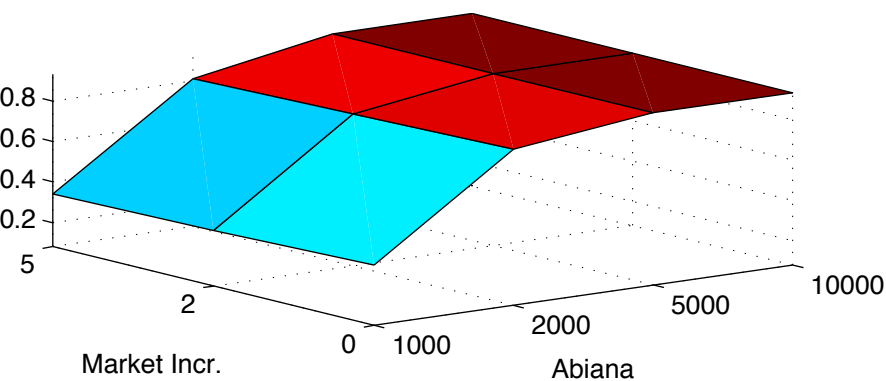
Inlet Costs 500000, Local Costs 500000



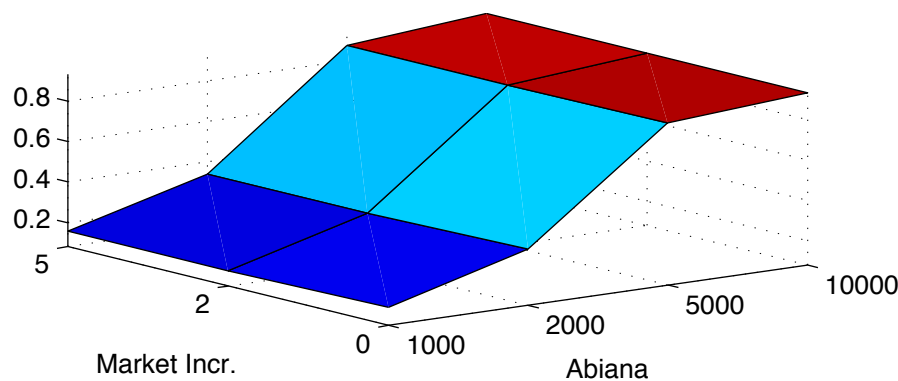
Inlet Costs 1000000, Local Costs 500000



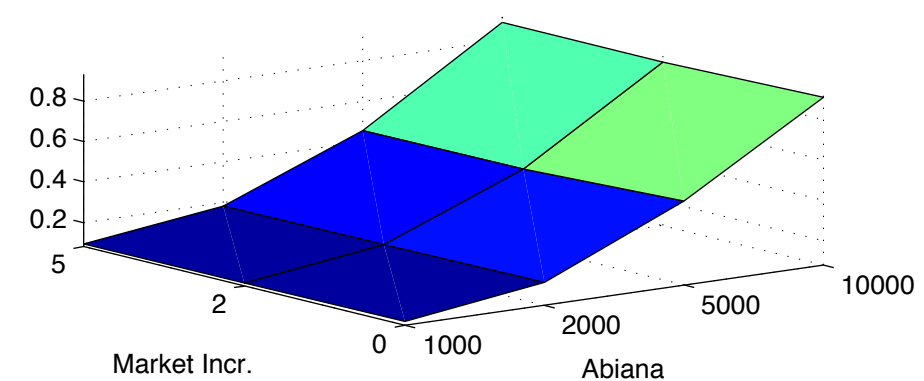
Inlet Costs 200000, Local Costs 1000000



Inlet Costs 500000, Local Costs 1000000

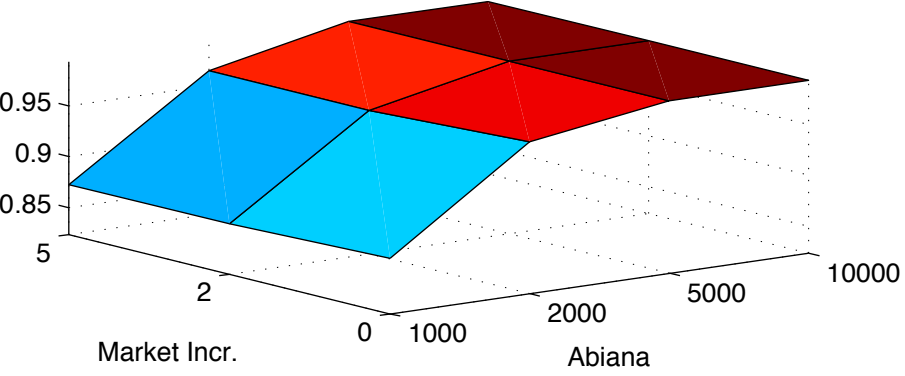


Inlet Costs 1000000, Local Costs 1000000

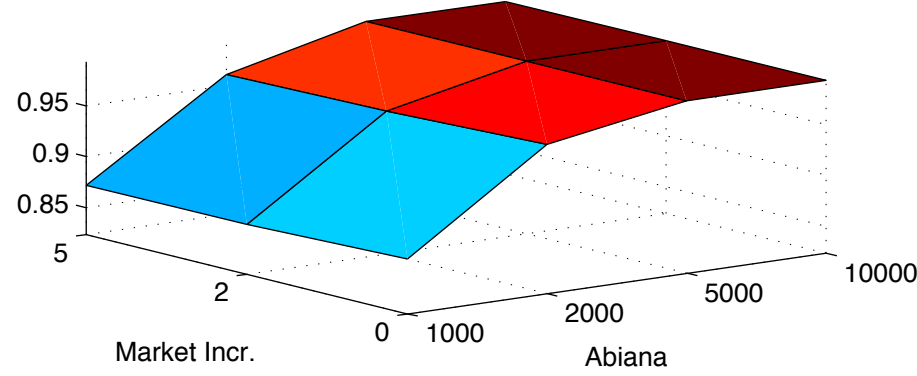


Local Maintenance – Number of Channels 1, with 24 Farms per channel

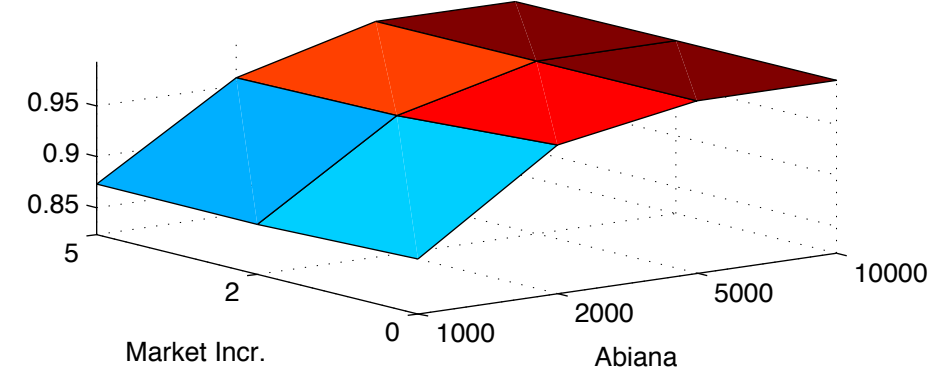
Inlet Costs 200000, Local Costs 200000



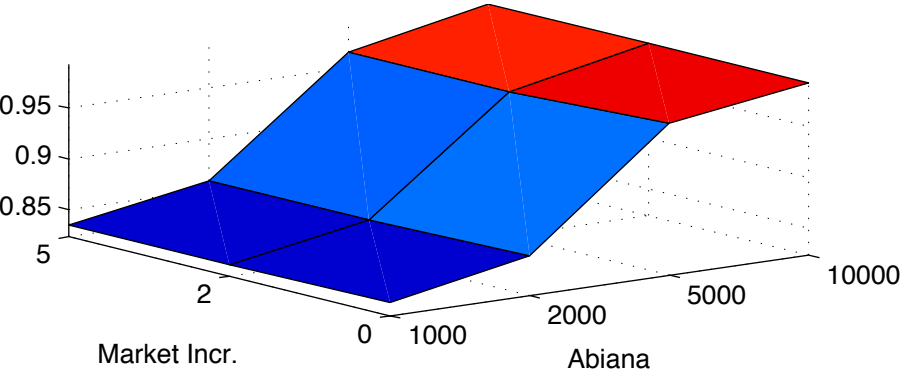
Inlet Costs 500000, Local Costs 200000



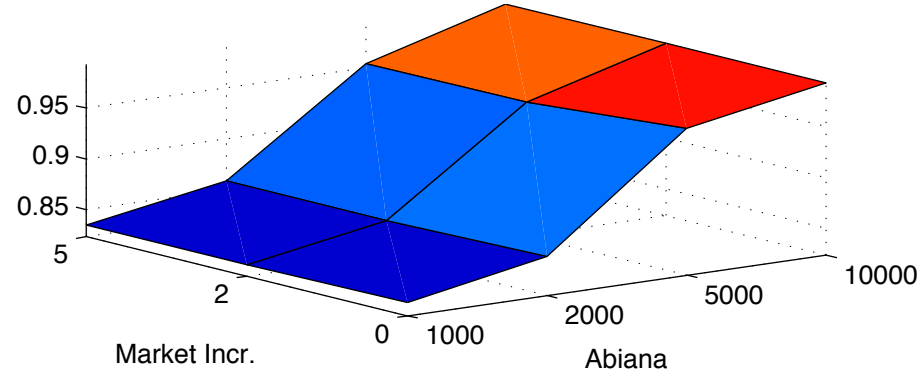
Inlet Costs 1000000, Local Costs 200000



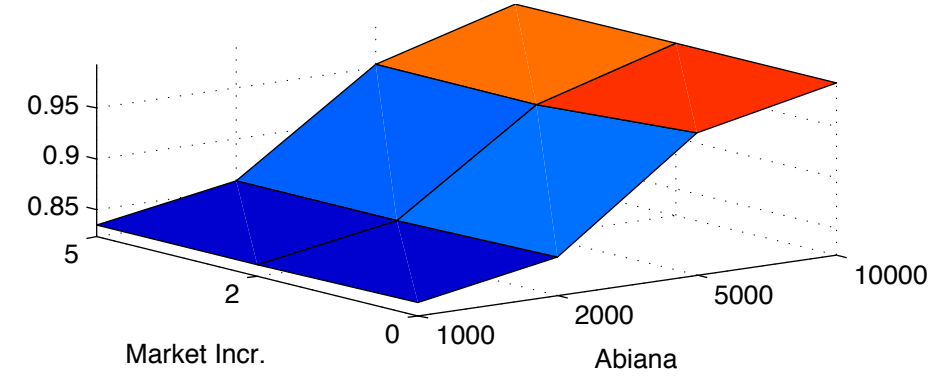
Inlet Costs 200000, Local Costs 500000



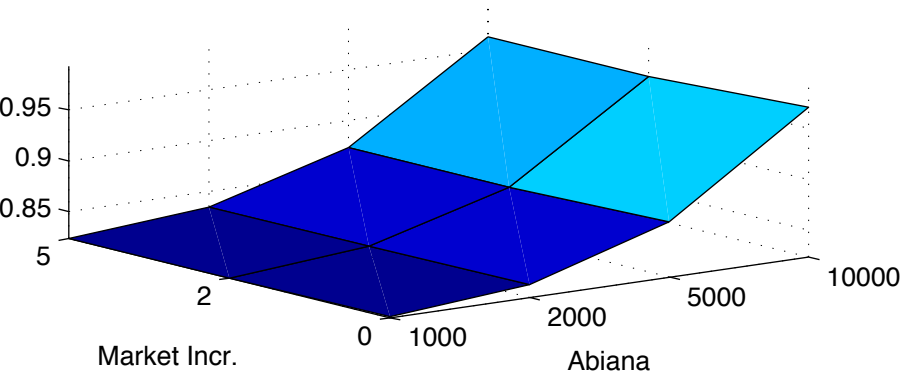
Inlet Costs 500000, Local Costs 500000



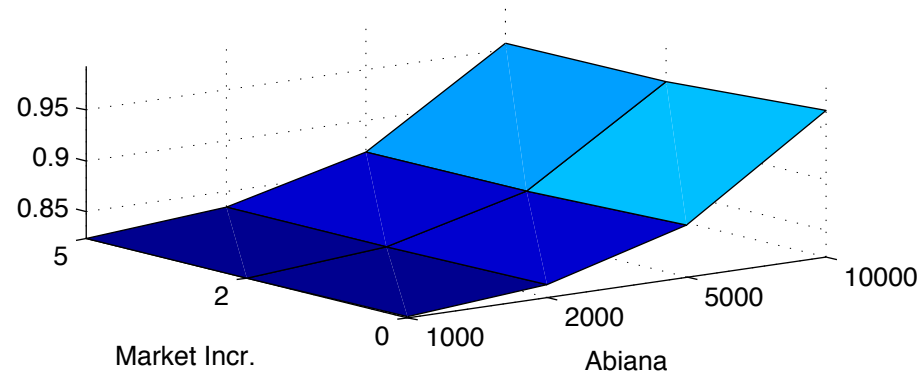
Inlet Costs 1000000, Local Costs 500000



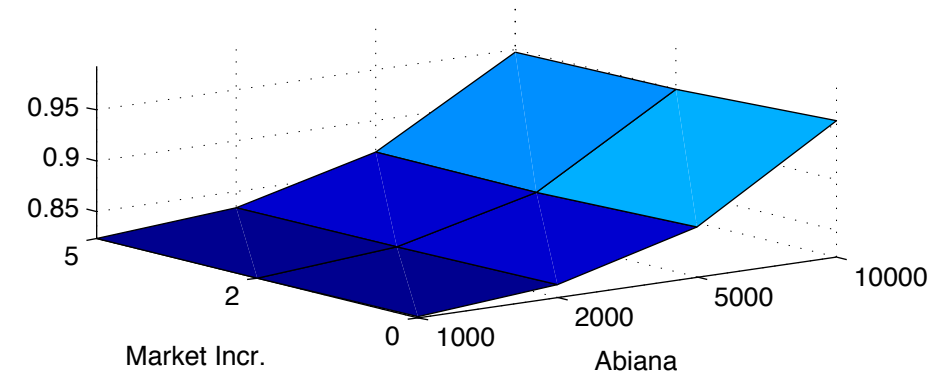
Inlet Costs 200000, Local Costs 1000000



Inlet Costs 500000, Local Costs 1000000

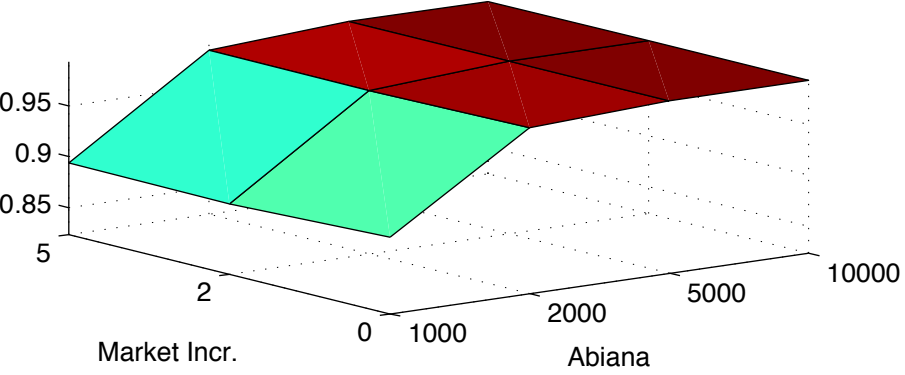


Inlet Costs 1000000, Local Costs 1000000

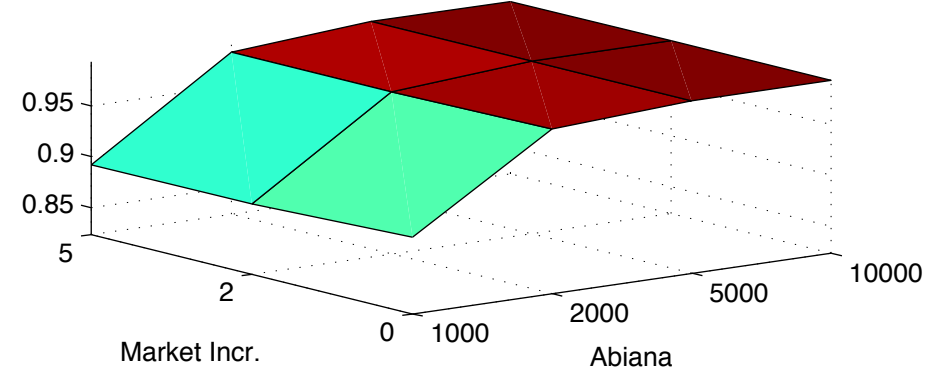


Local Maintenance – Number of Channels 2, with 12 Farms per channel

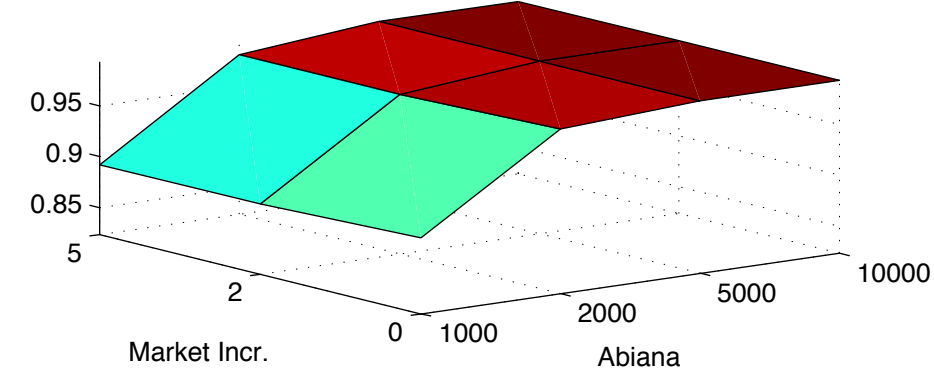
Inlet Costs 200000, Local Costs 200000



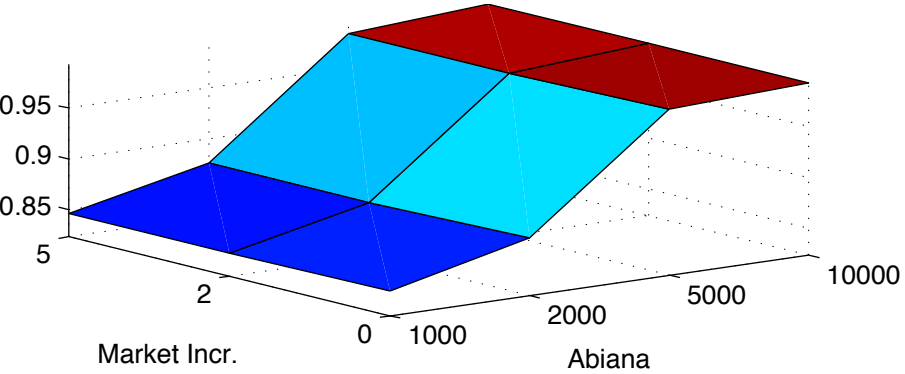
Inlet Costs 500000, Local Costs 200000



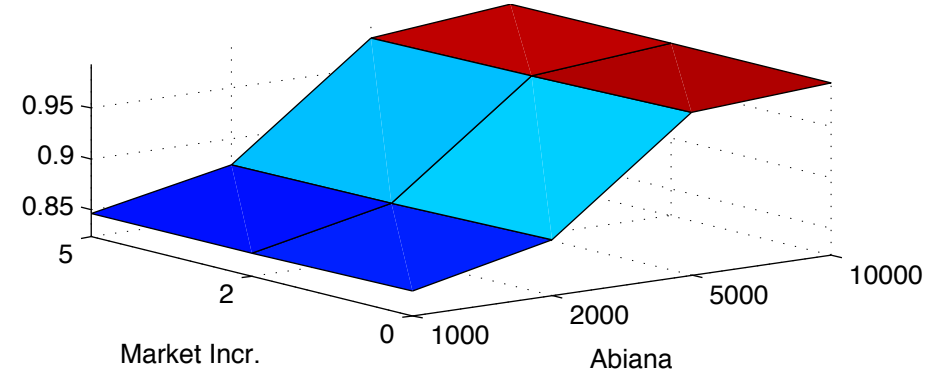
Inlet Costs 1000000, Local Costs 200000



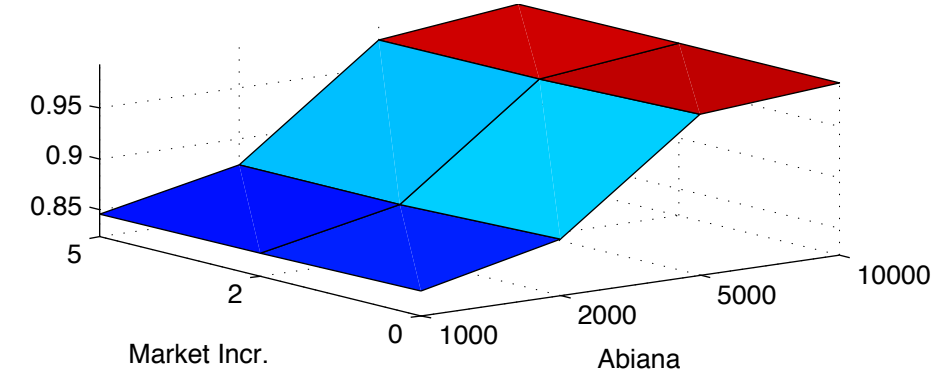
Inlet Costs 200000, Local Costs 500000



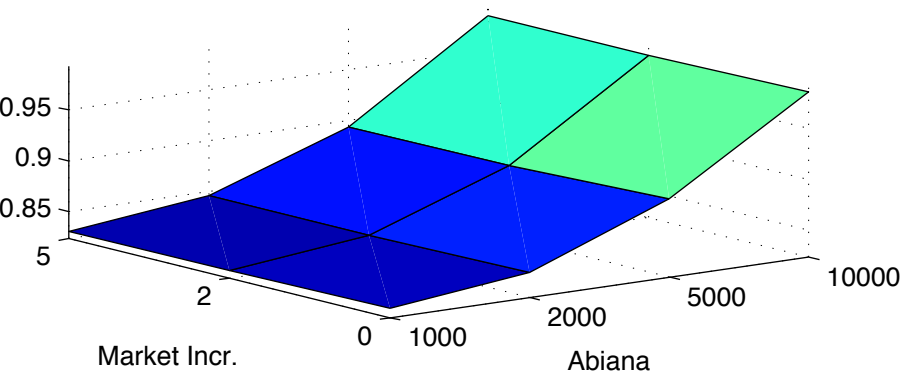
Inlet Costs 500000, Local Costs 500000



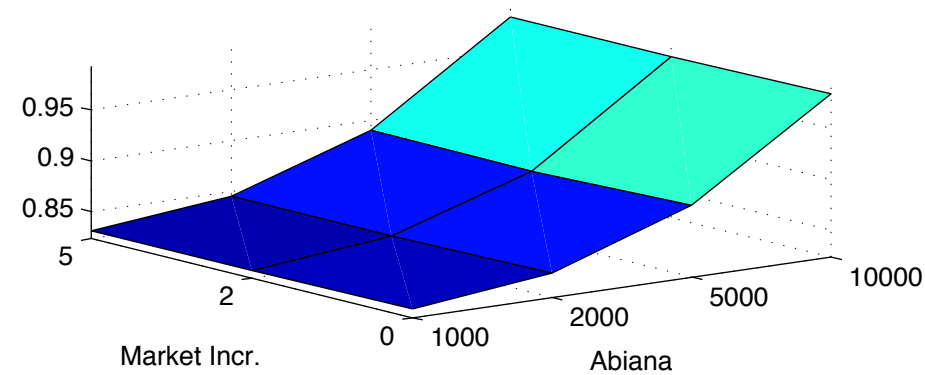
Inlet Costs 1000000, Local Costs 500000



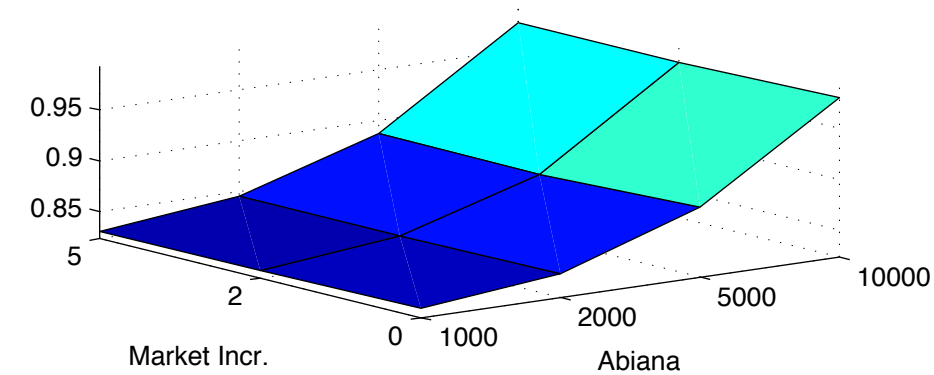
Inlet Costs 200000, Local Costs 1000000



Inlet Costs 500000, Local Costs 1000000

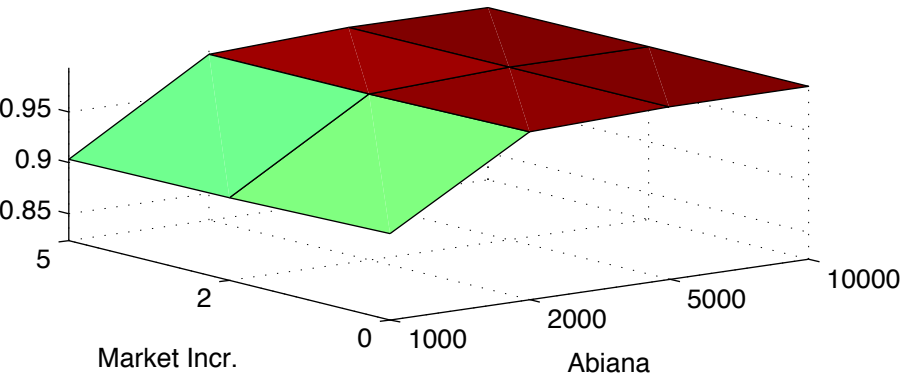


Inlet Costs 1000000, Local Costs 1000000

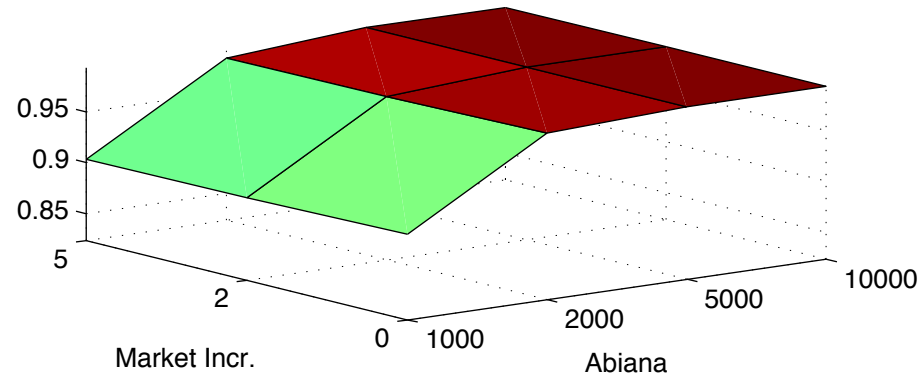


Local Maintenance – Number of Channels 3, with 8 Farms per channel

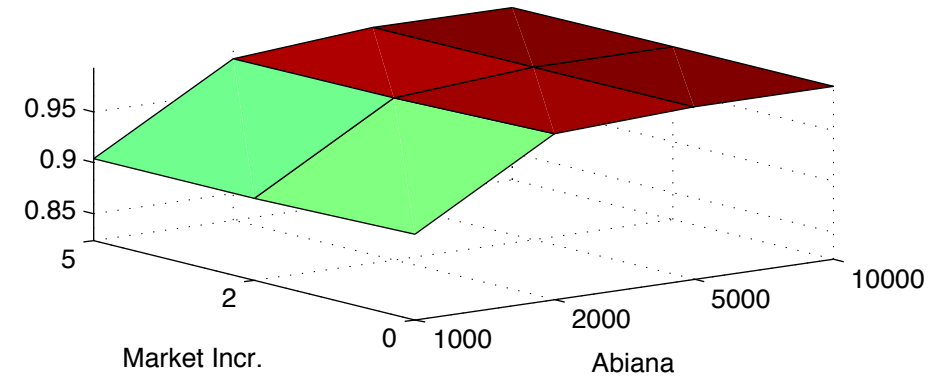
Inlet Costs 200000, Local Costs 200000



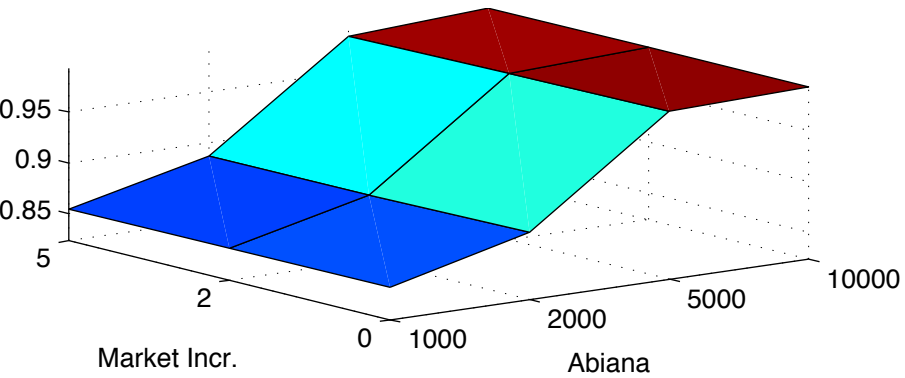
Inlet Costs 500000, Local Costs 200000



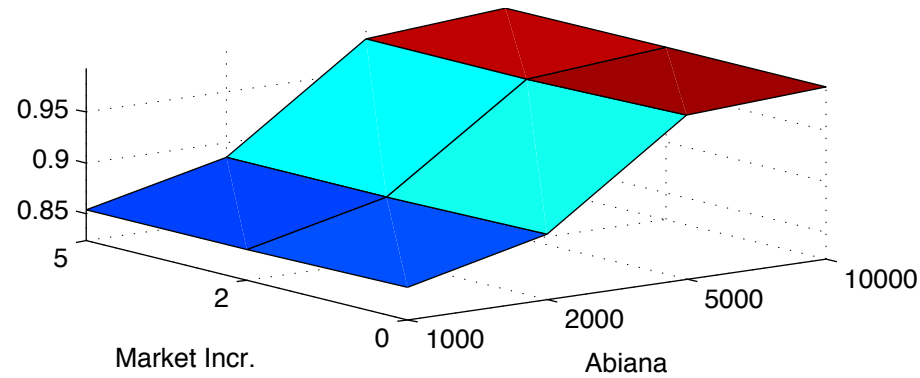
Inlet Costs 1000000, Local Costs 200000



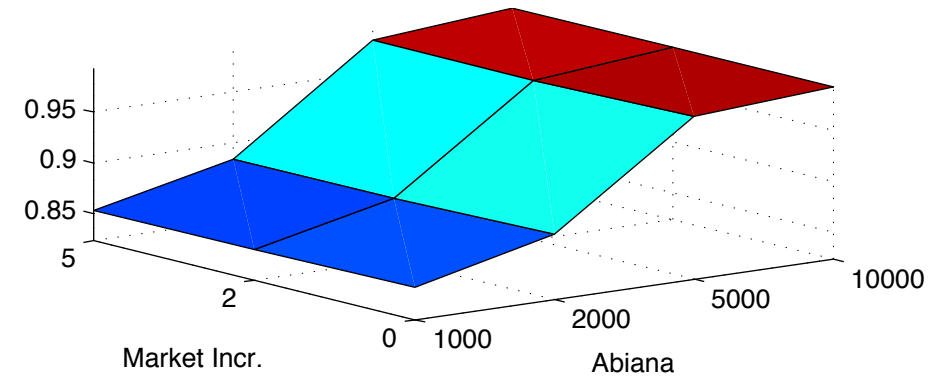
Inlet Costs 200000, Local Costs 500000



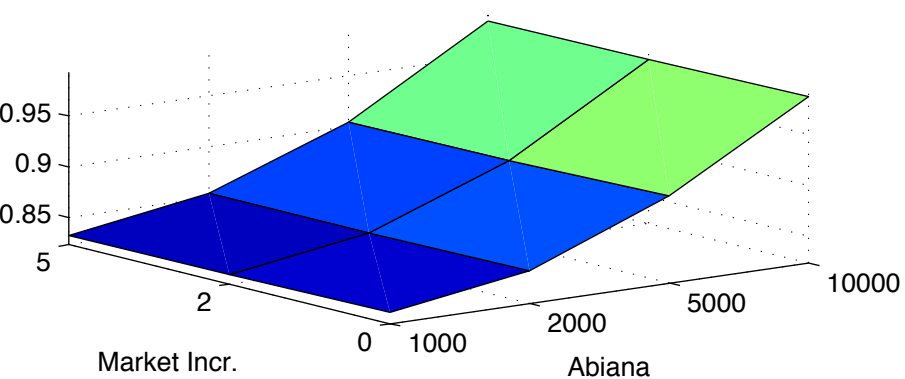
Inlet Costs 500000, Local Costs 500000



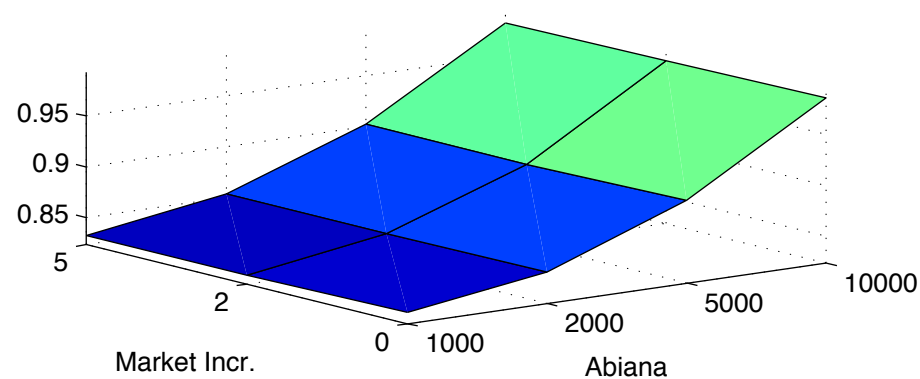
Inlet Costs 1000000, Local Costs 500000



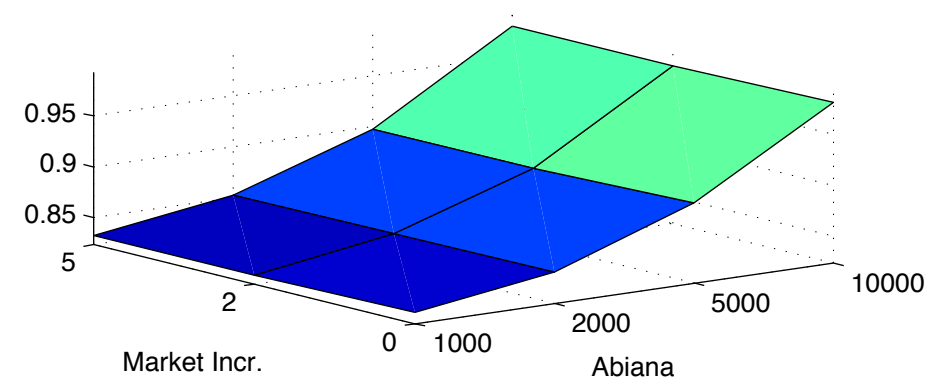
Inlet Costs 200000, Local Costs 1000000



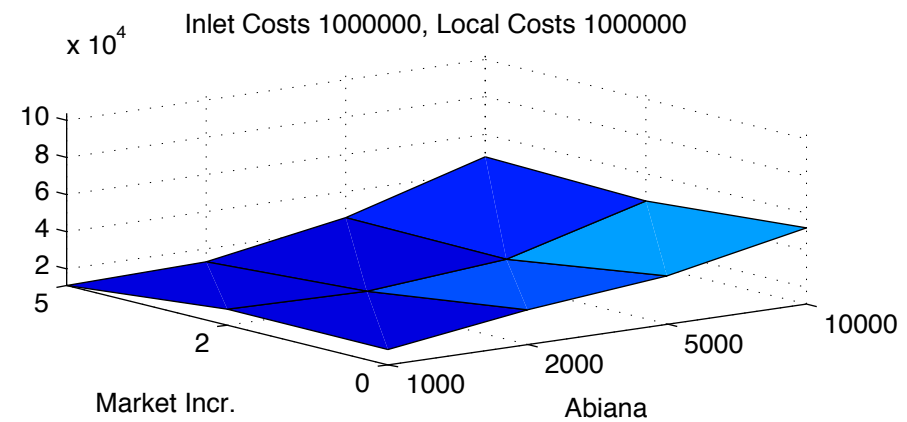
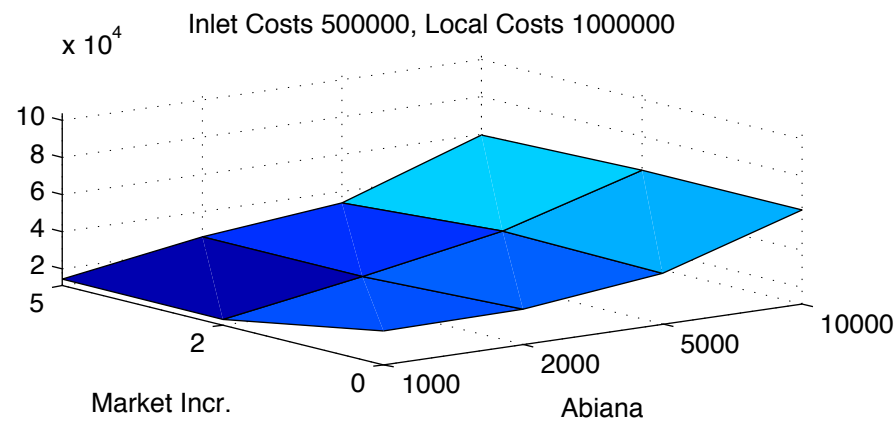
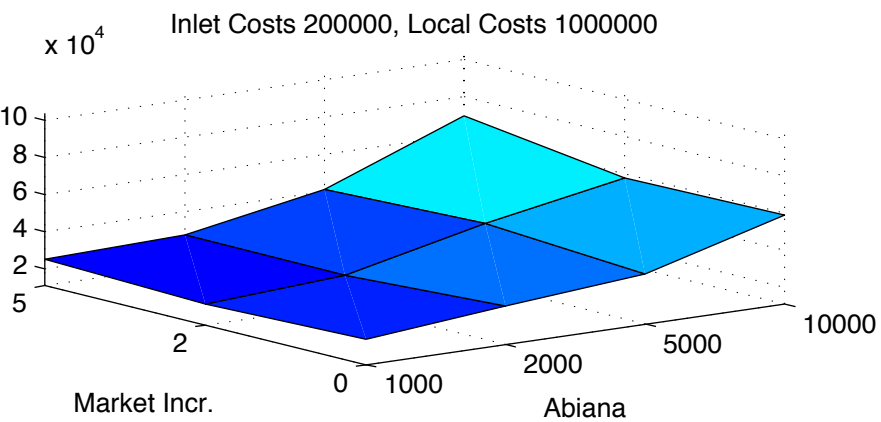
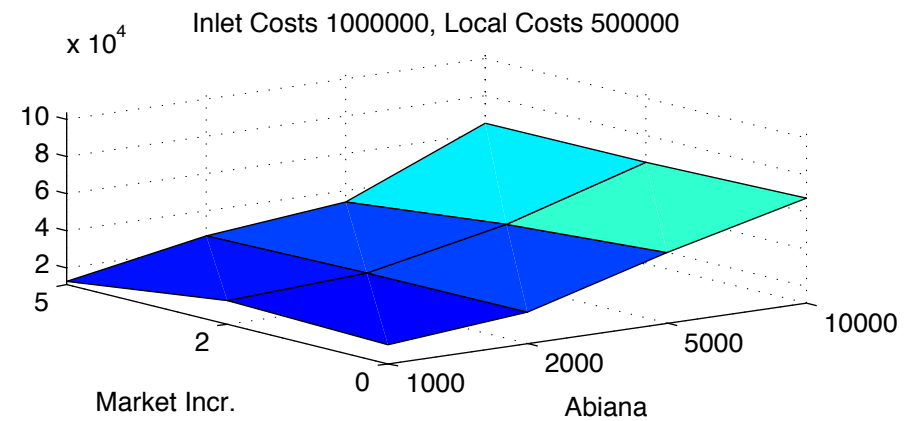
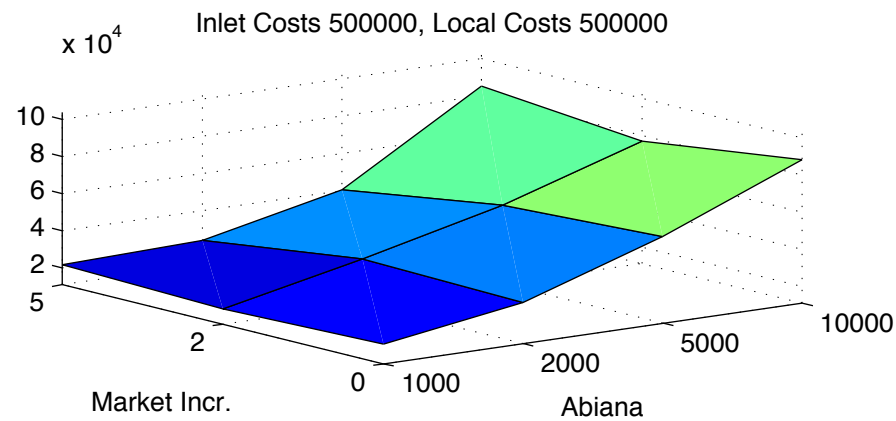
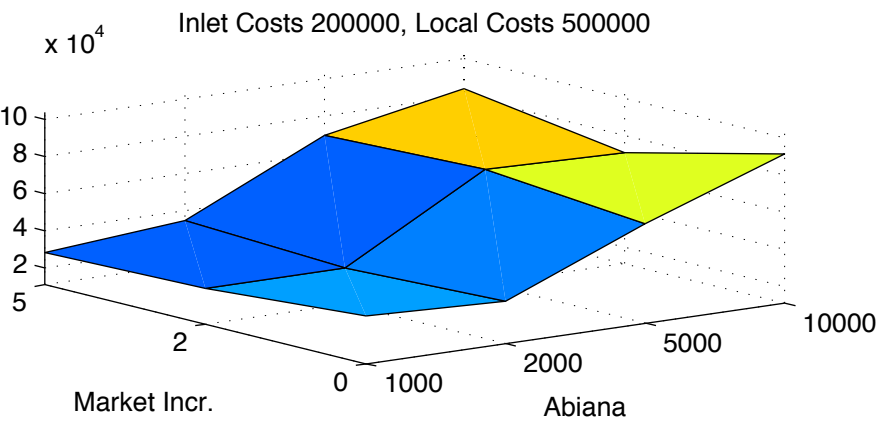
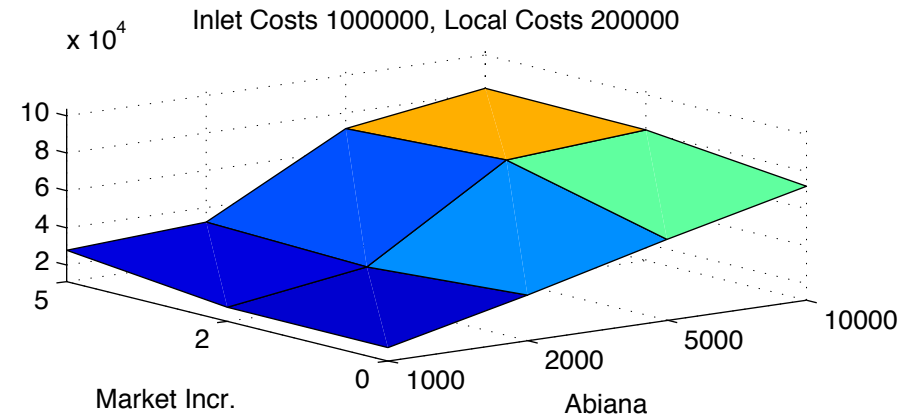
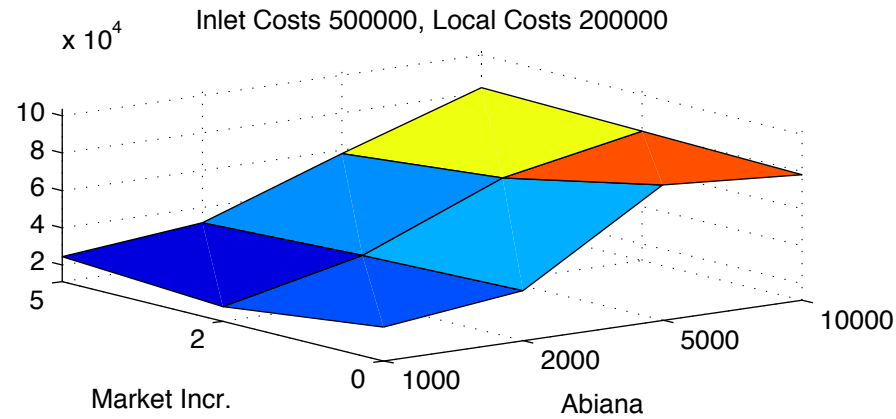
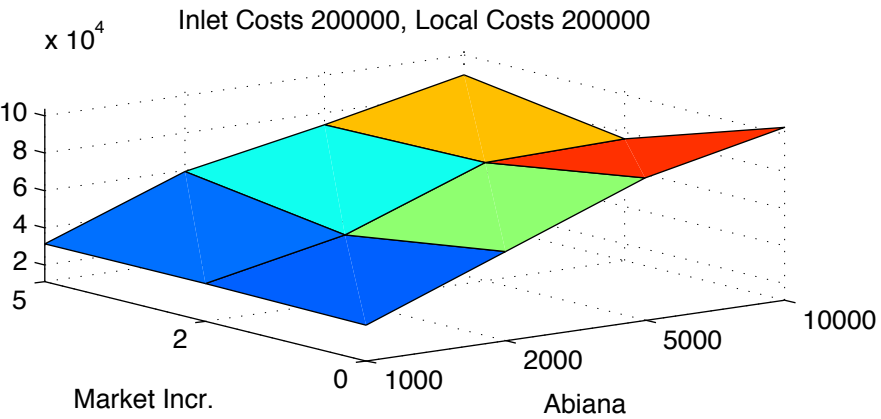
Inlet Costs 500000, Local Costs 1000000



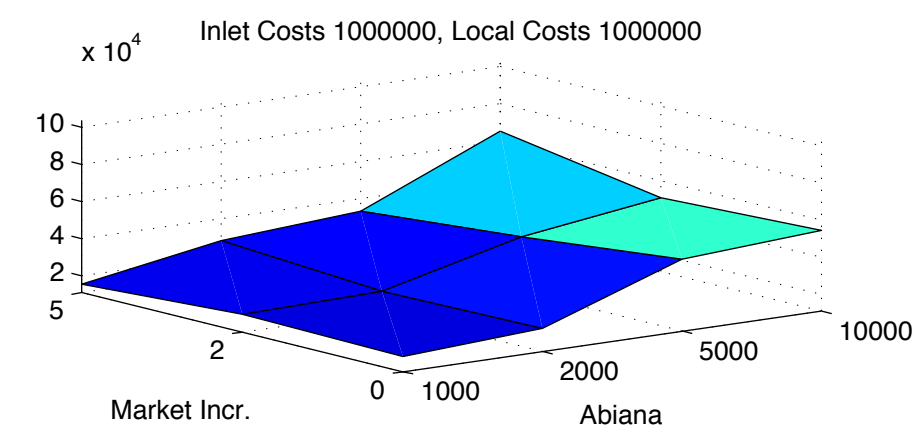
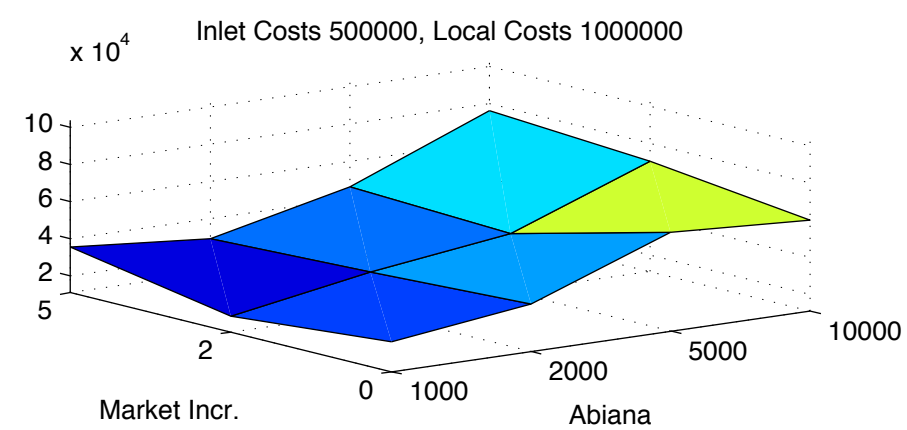
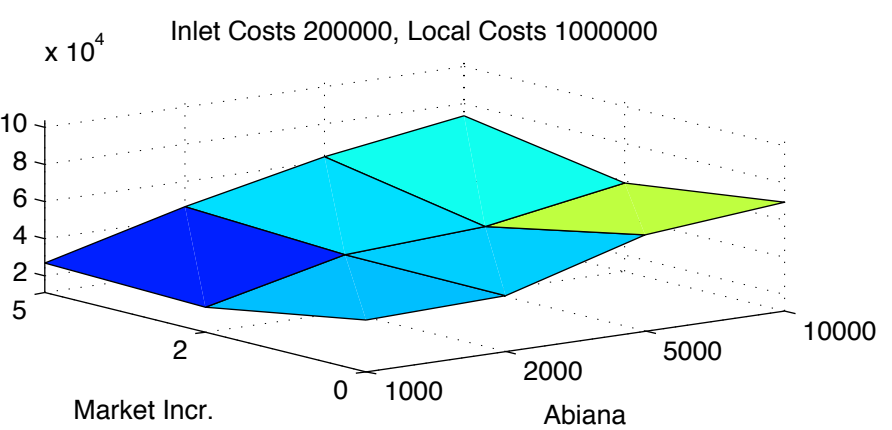
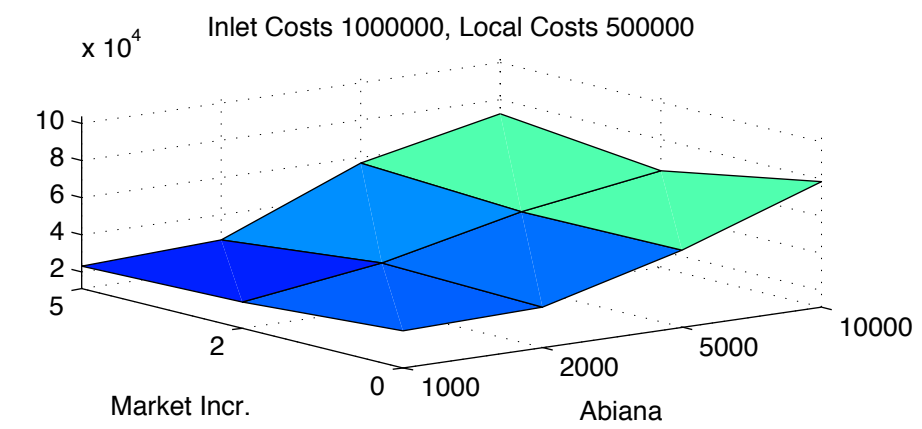
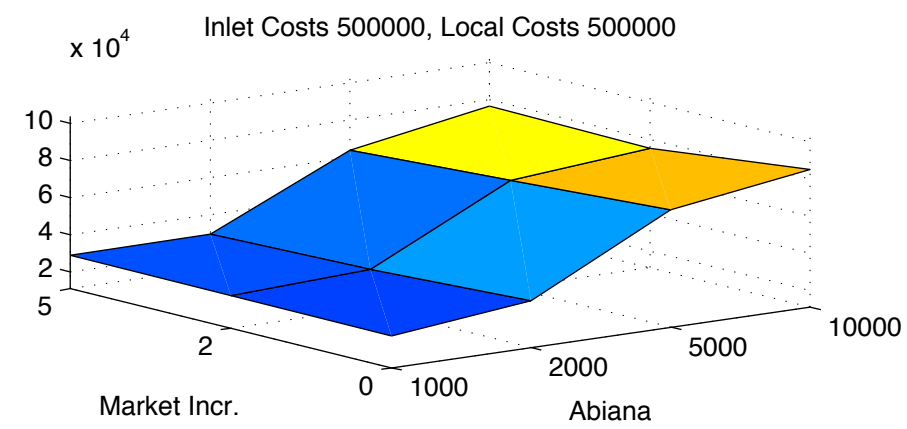
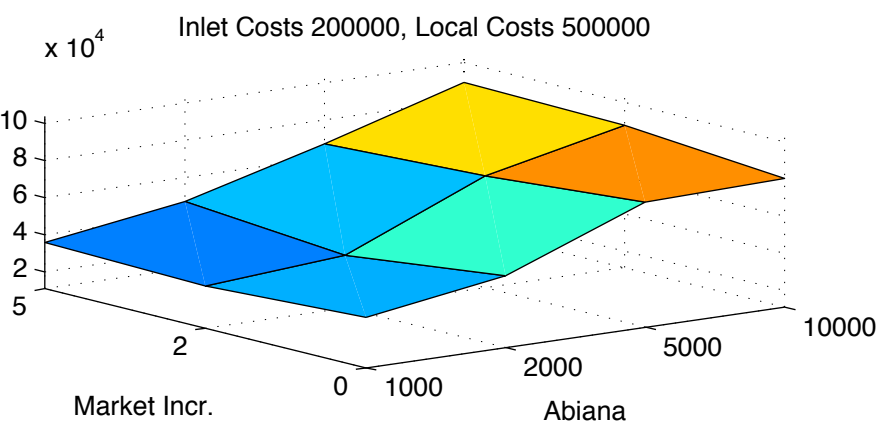
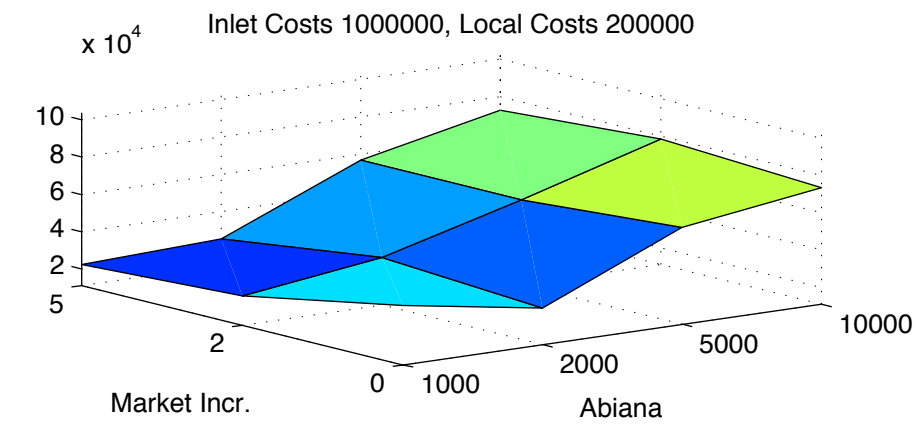
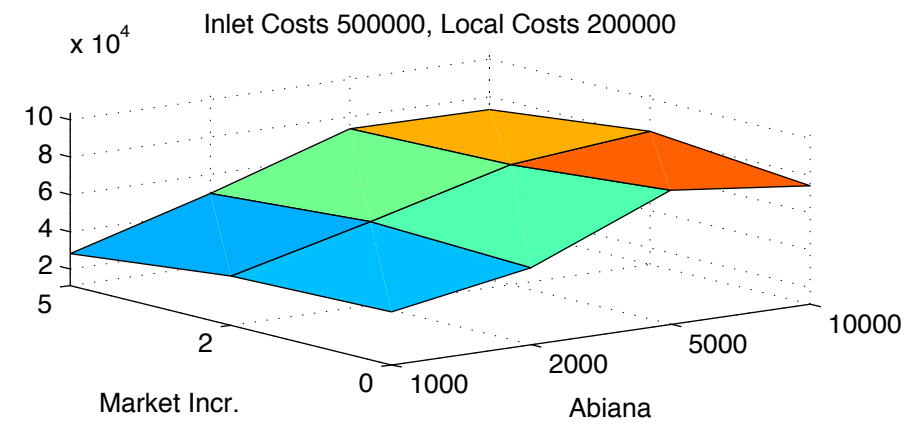
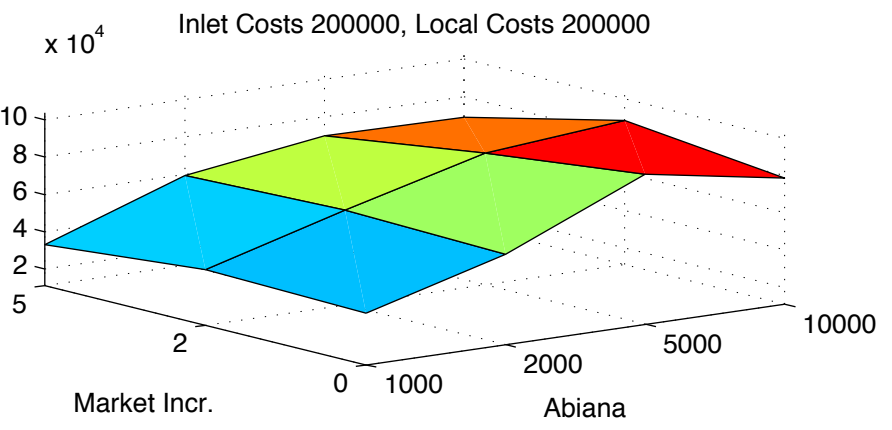
Inlet Costs 1000000, Local Costs 1000000



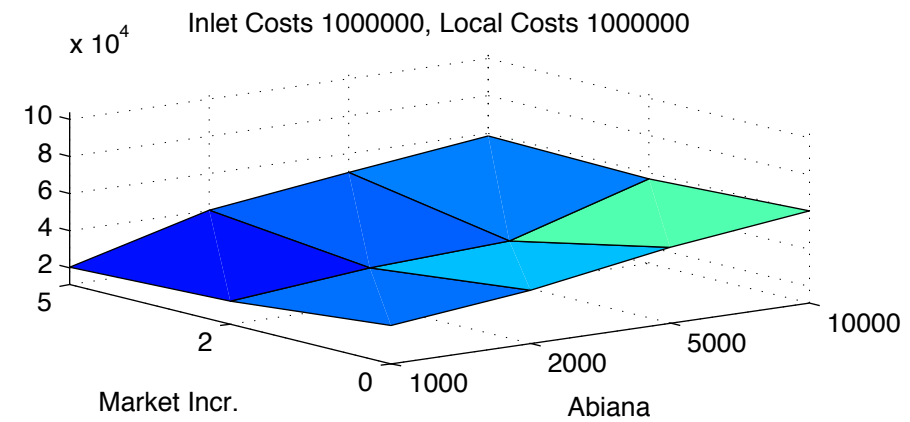
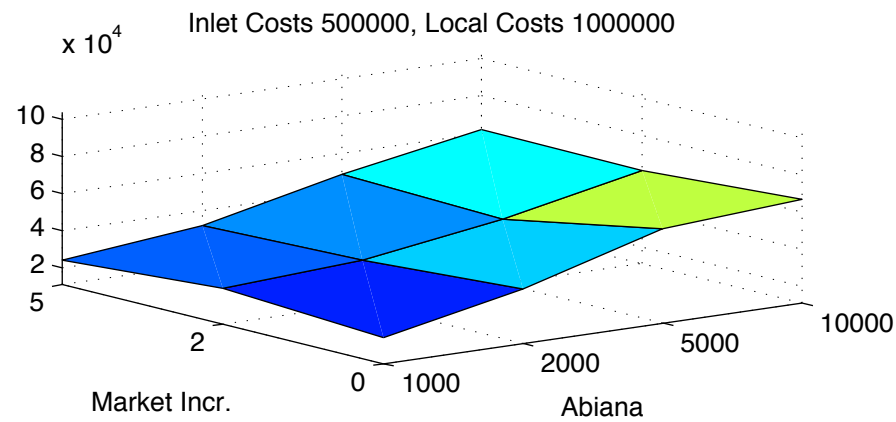
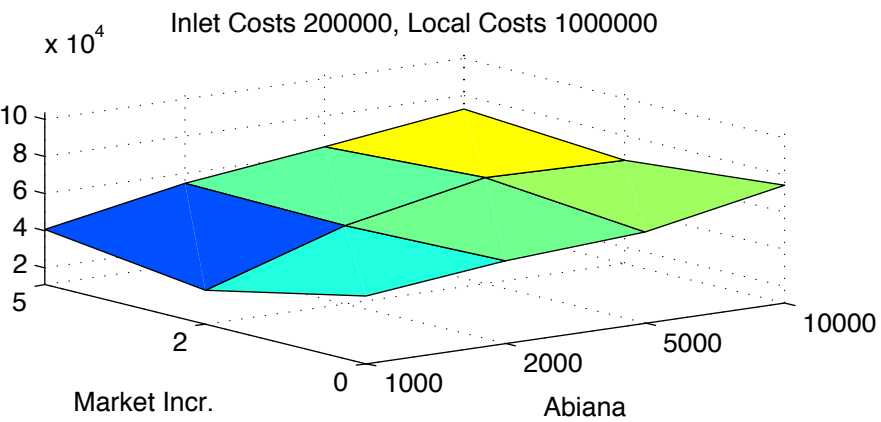
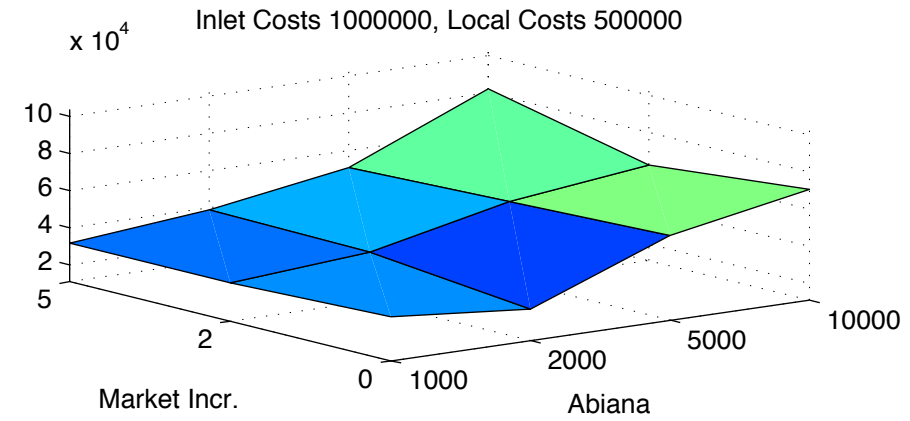
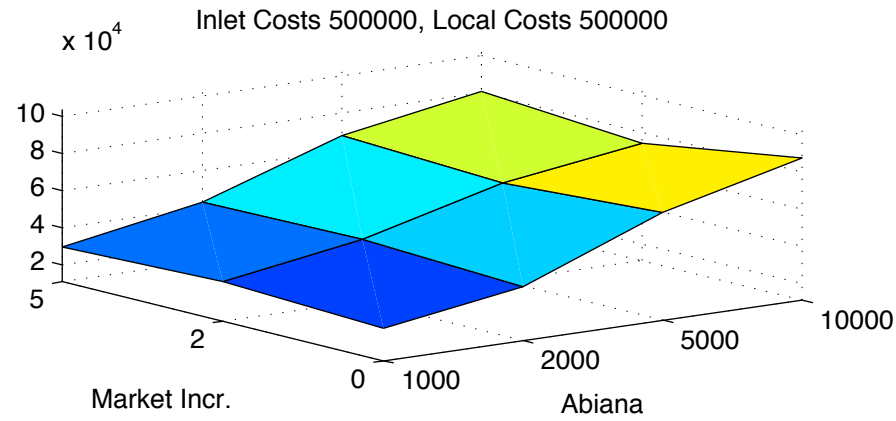
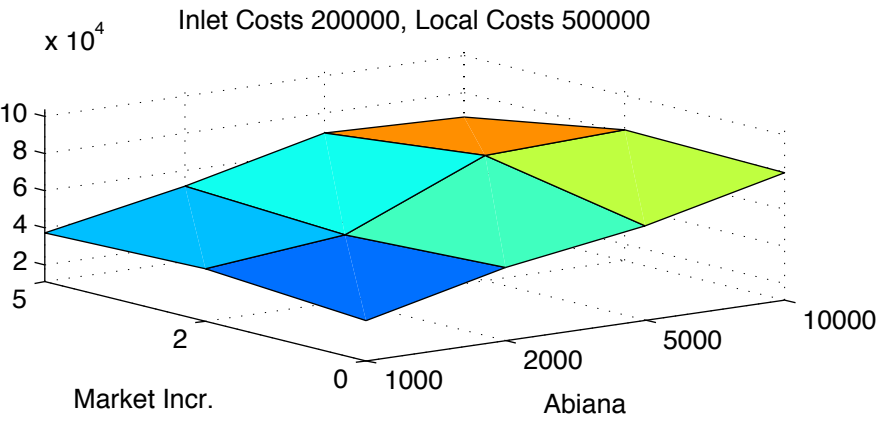
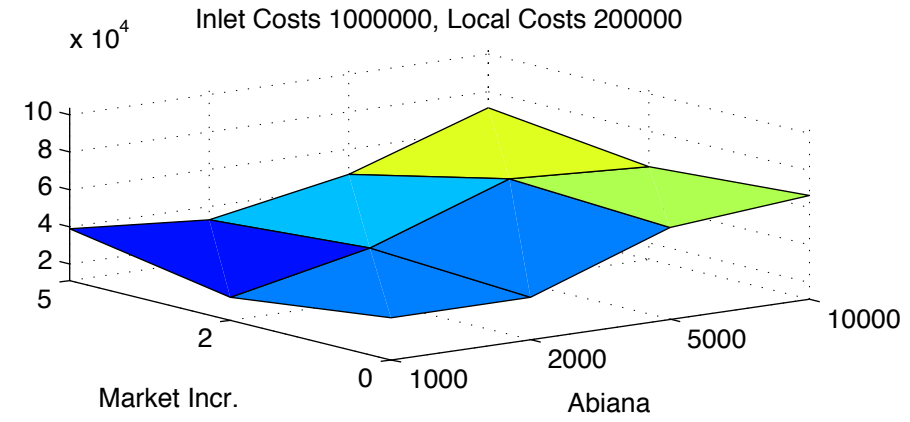
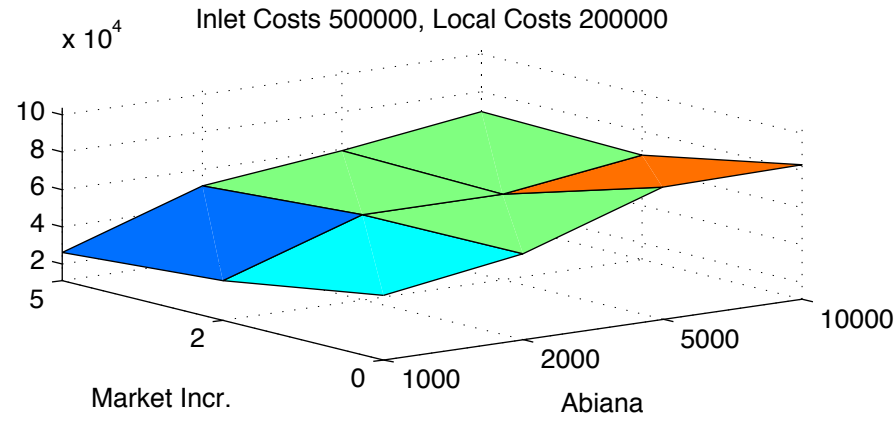
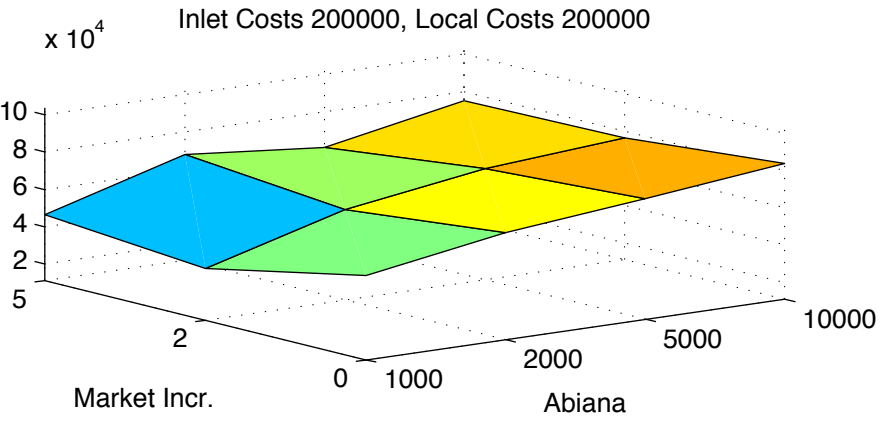
Average VOP – Number of Channels 1, with 24 Farms per channel



Average VOP – Number of Channels 2, with 12 Farms per channel

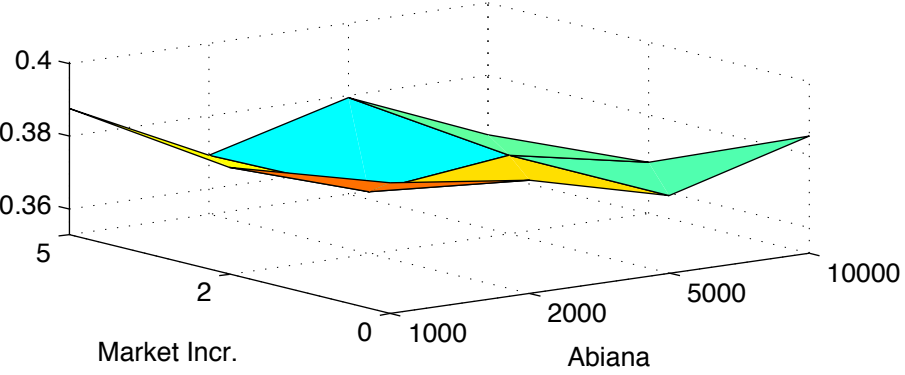


Average VOP – Number of Channels 3, with 8 Farms per channel

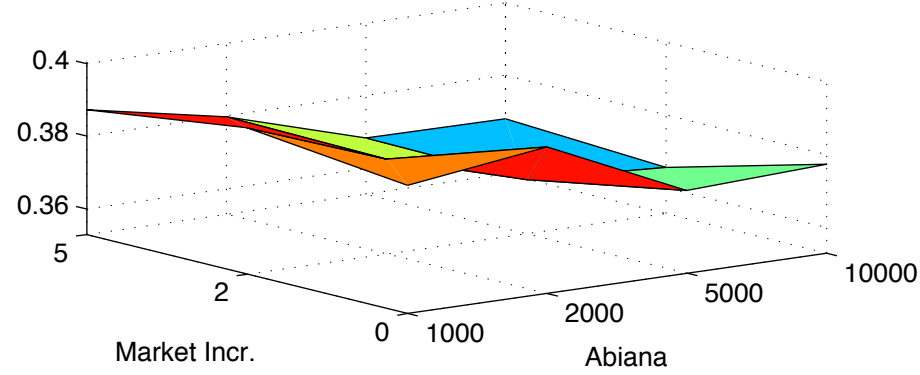


Wealth Gini – Number of Channels 1, with 24 Farms per channel

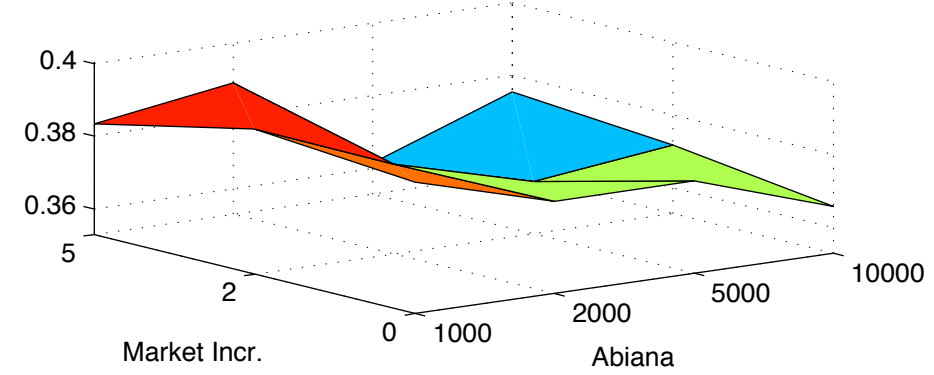
Inlet Costs 200000, Local Costs 200000



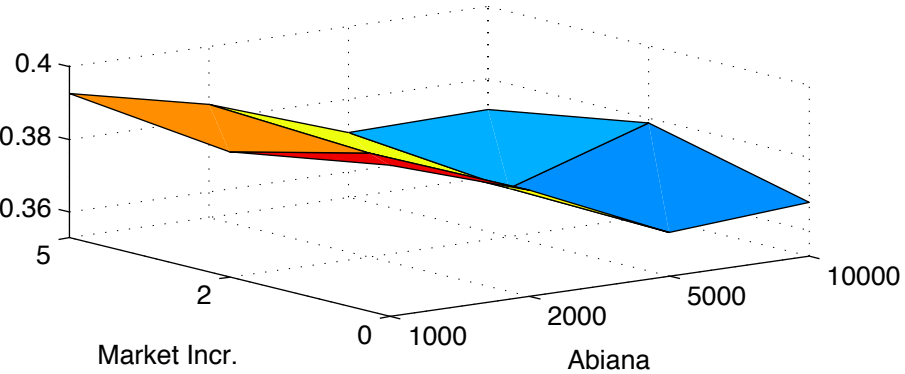
Inlet Costs 500000, Local Costs 200000



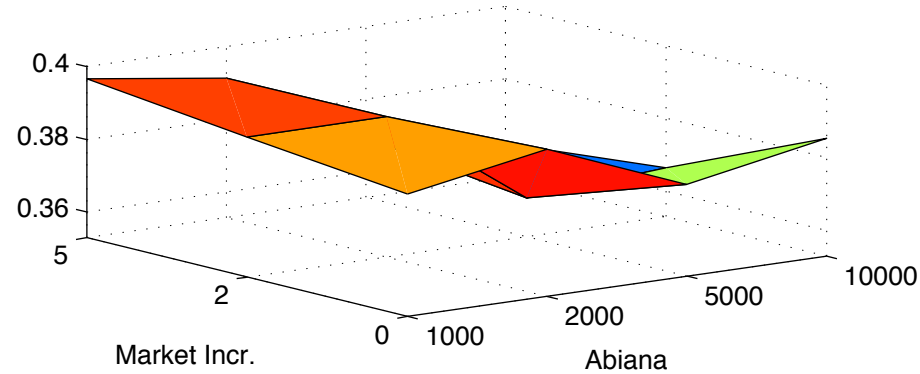
Inlet Costs 1000000, Local Costs 200000



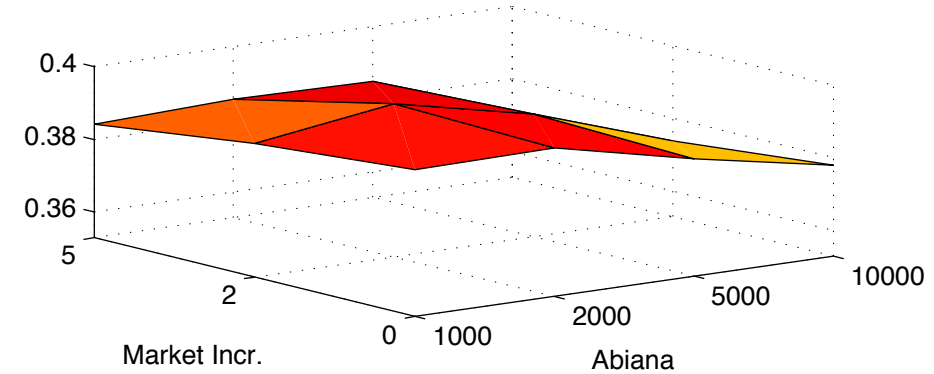
Inlet Costs 200000, Local Costs 500000



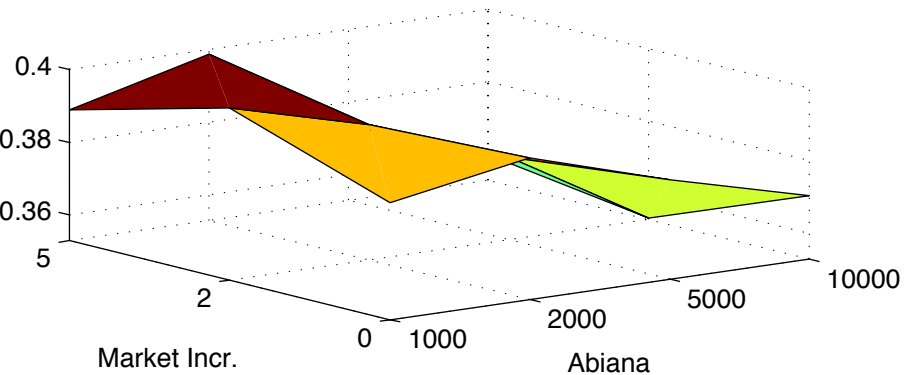
Inlet Costs 500000, Local Costs 500000



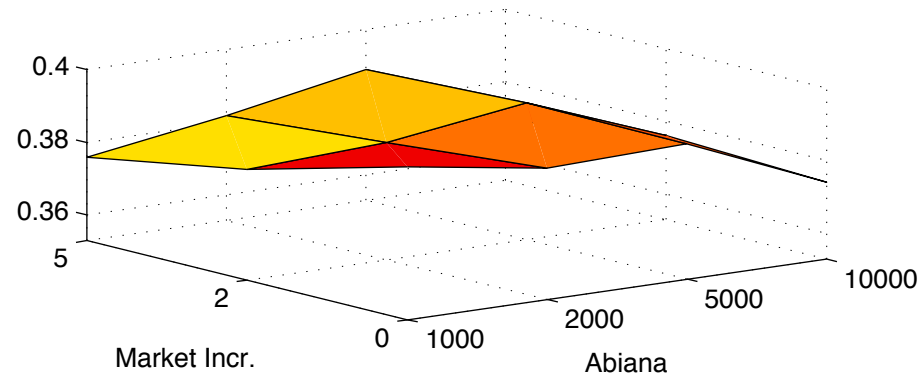
Inlet Costs 1000000, Local Costs 500000



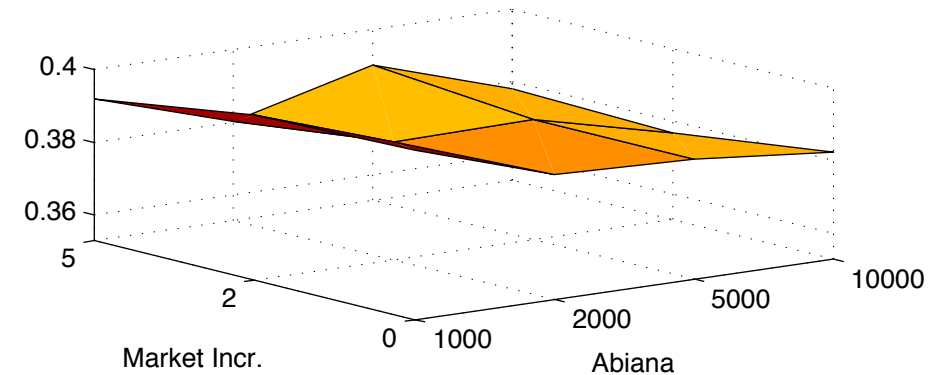
Inlet Costs 200000, Local Costs 1000000



Inlet Costs 500000, Local Costs 1000000

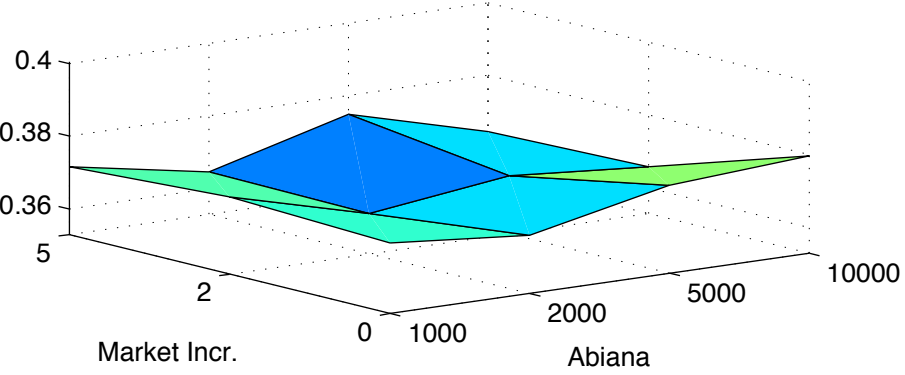


Inlet Costs 1000000, Local Costs 1000000

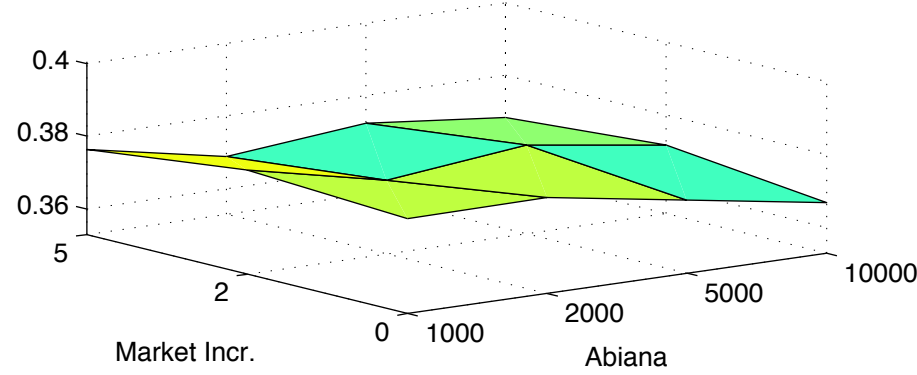


Wealth Gini – Number of Channels 2, with 12 Farms per channel

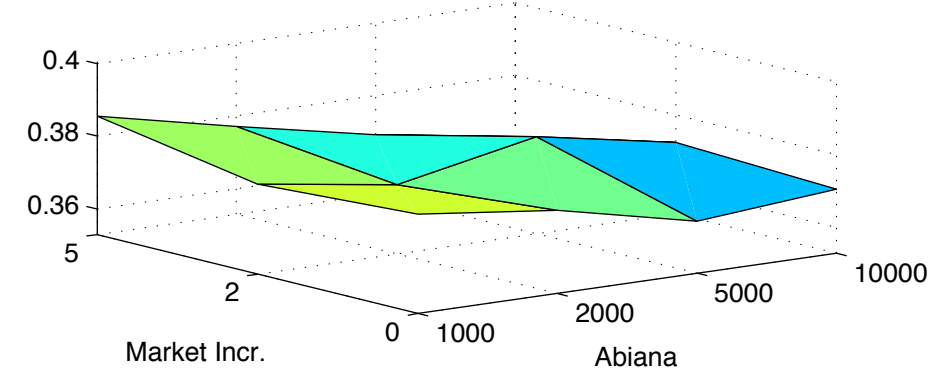
Inlet Costs 200000, Local Costs 200000



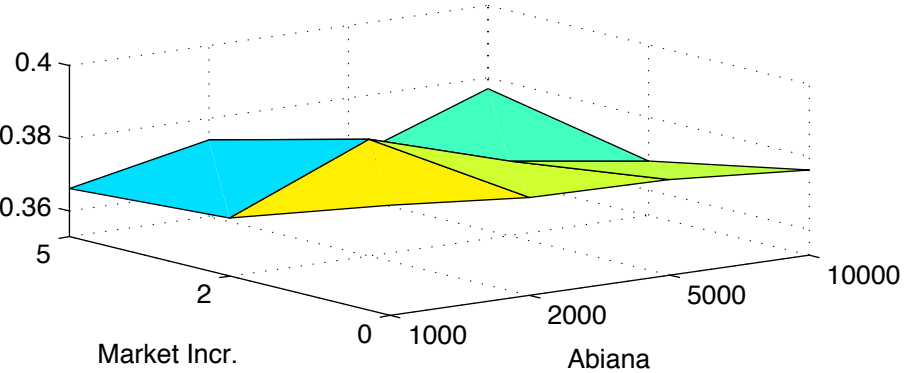
Inlet Costs 500000, Local Costs 200000



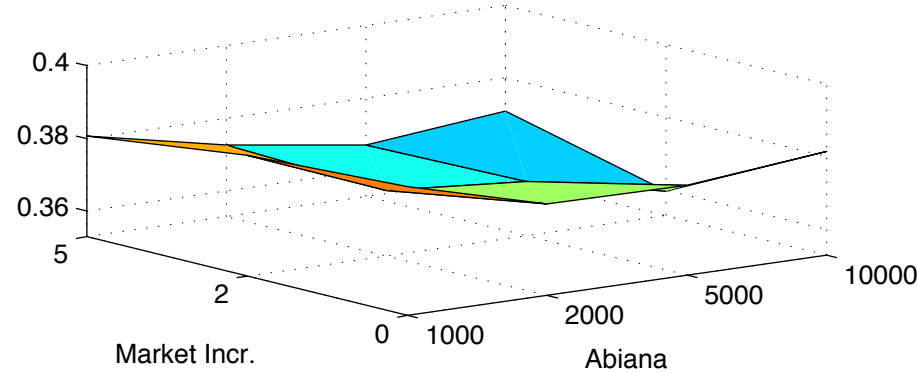
Inlet Costs 1000000, Local Costs 200000



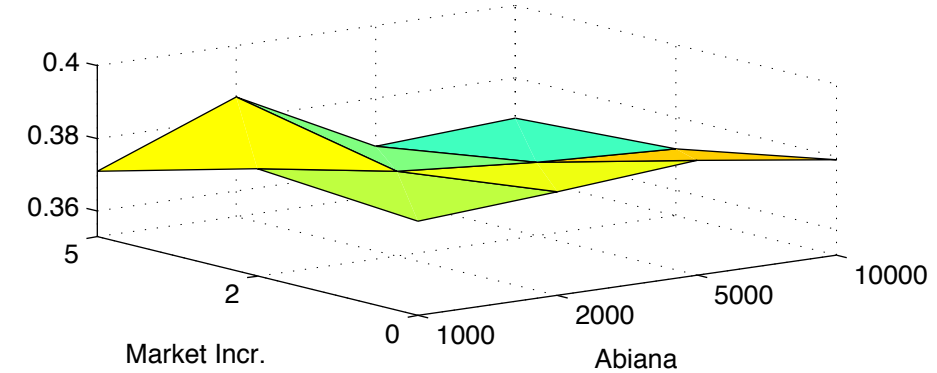
Inlet Costs 200000, Local Costs 500000



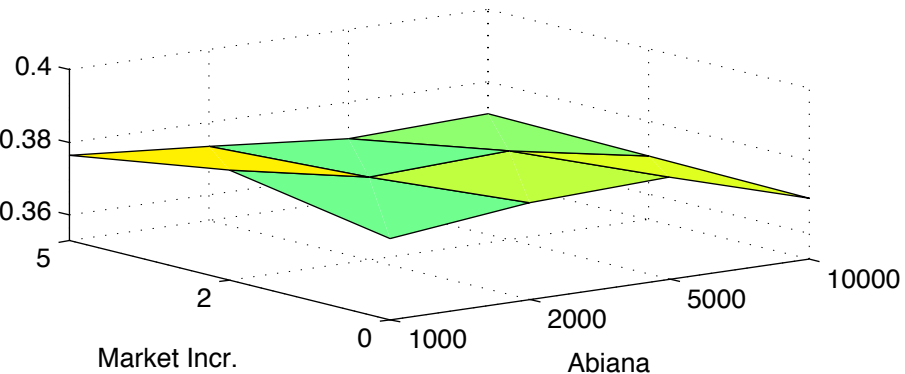
Inlet Costs 500000, Local Costs 500000



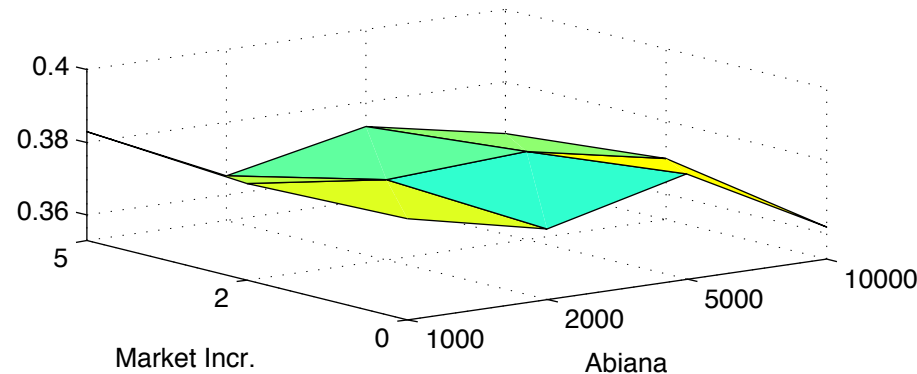
Inlet Costs 1000000, Local Costs 500000



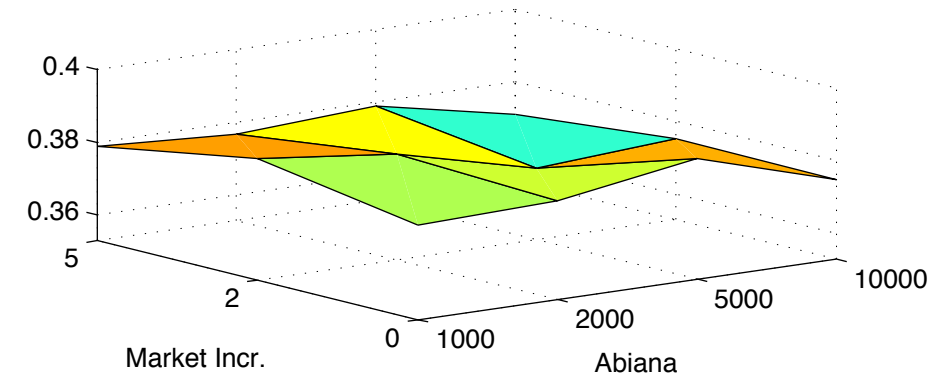
Inlet Costs 200000, Local Costs 1000000



Inlet Costs 500000, Local Costs 1000000

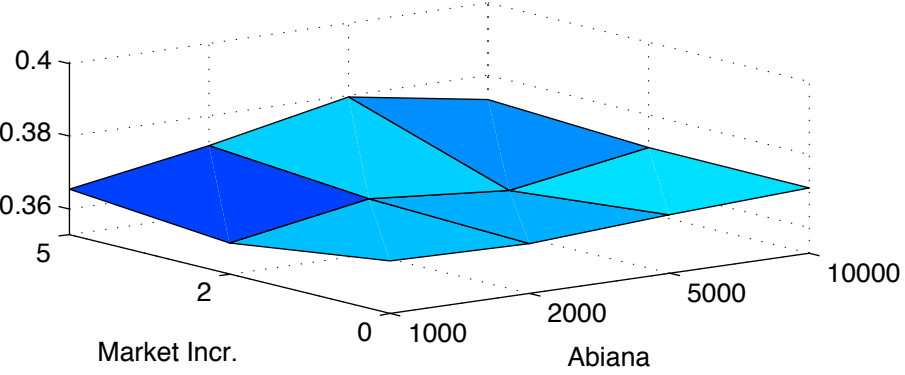


Inlet Costs 1000000, Local Costs 1000000

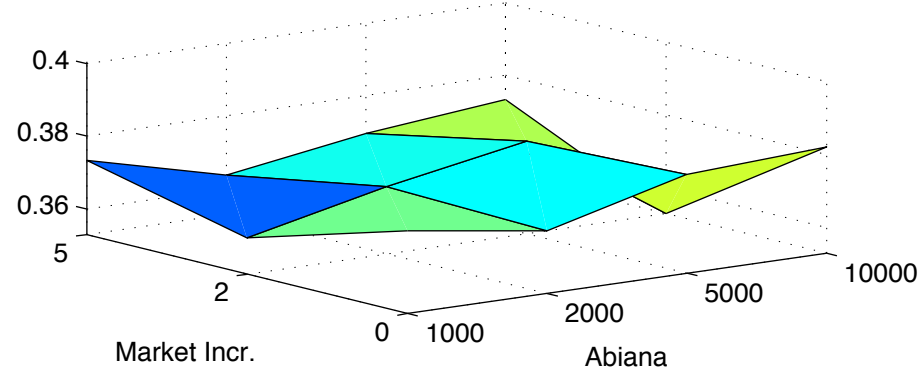


Wealth Gini – Number of Channels 3, with 8 Farms per channel

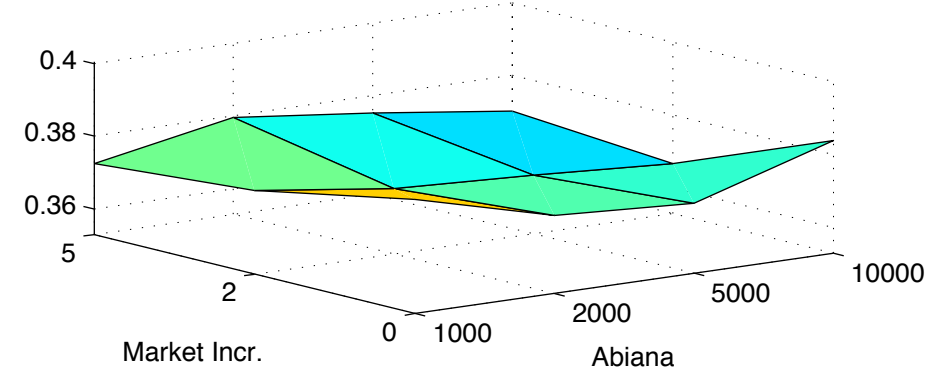
Inlet Costs 200000, Local Costs 200000



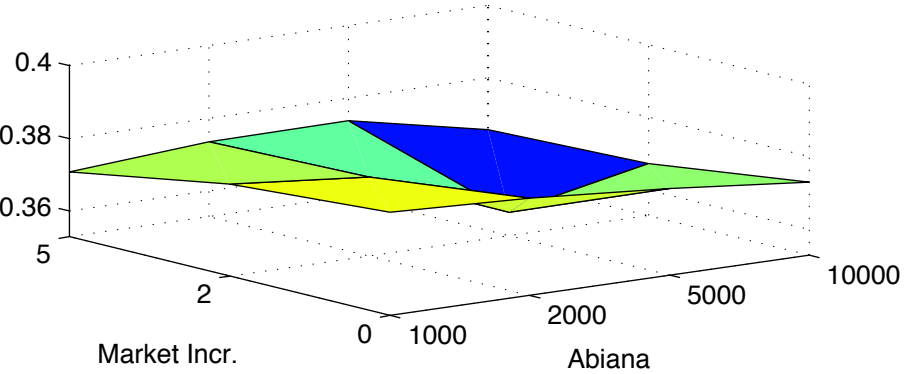
Inlet Costs 500000, Local Costs 200000



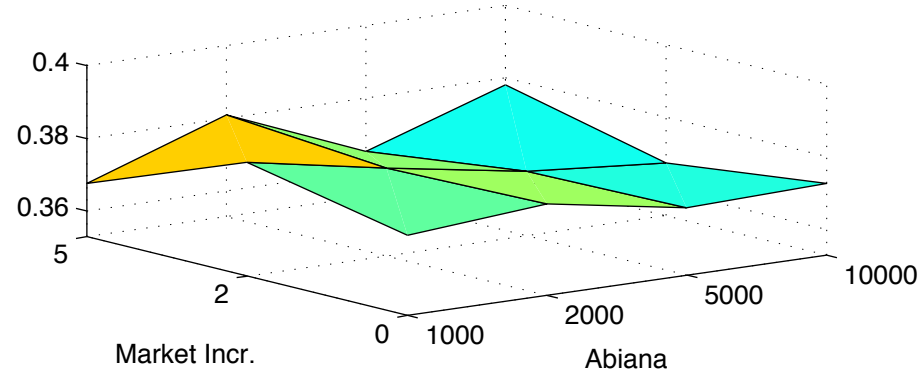
Inlet Costs 1000000, Local Costs 200000



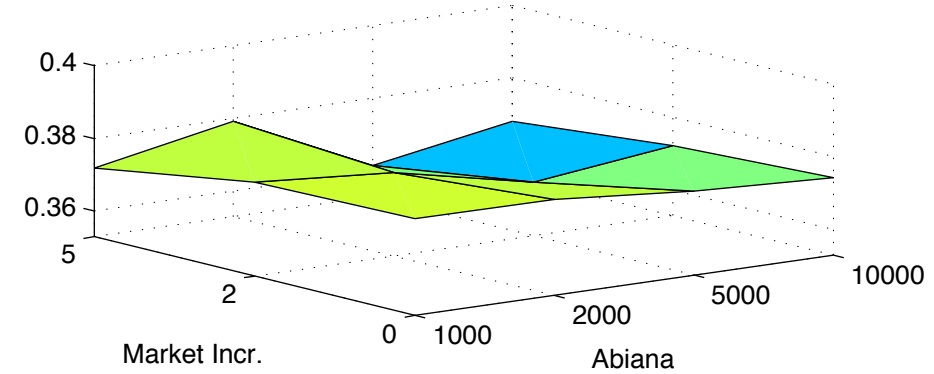
Inlet Costs 200000, Local Costs 500000



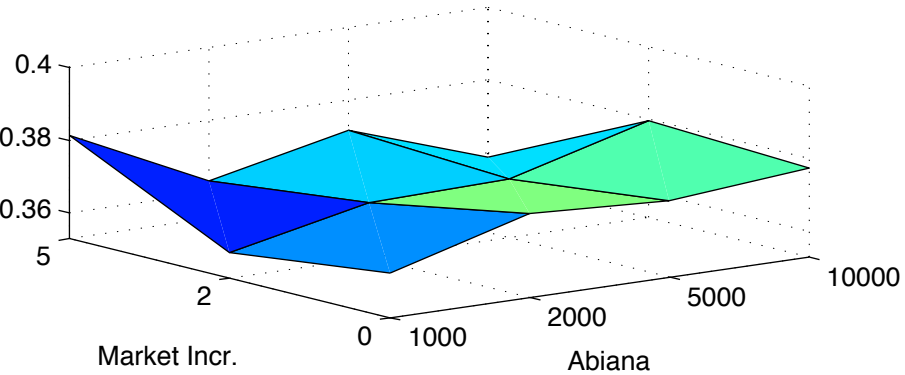
Inlet Costs 500000, Local Costs 500000



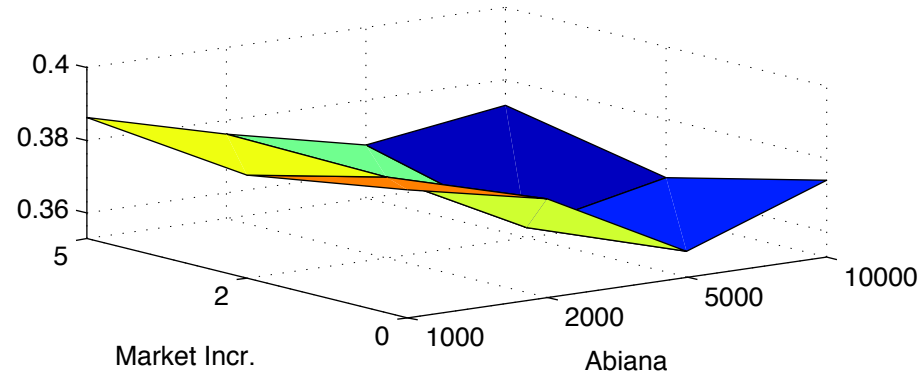
Inlet Costs 1000000, Local Costs 500000



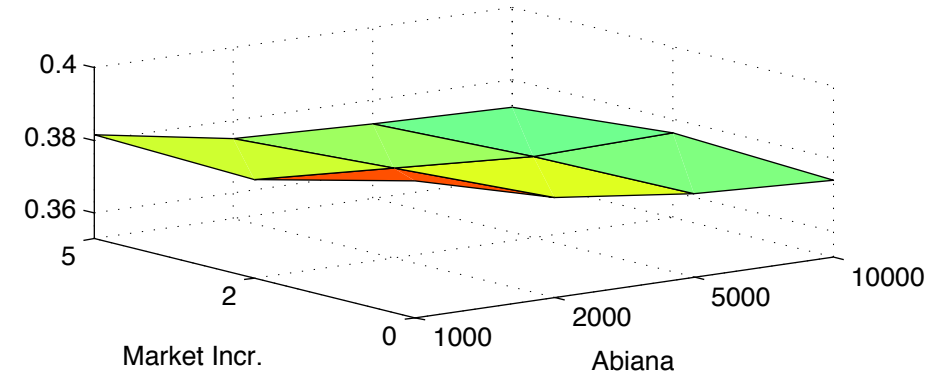
Inlet Costs 200000, Local Costs 1000000



Inlet Costs 500000, Local Costs 1000000

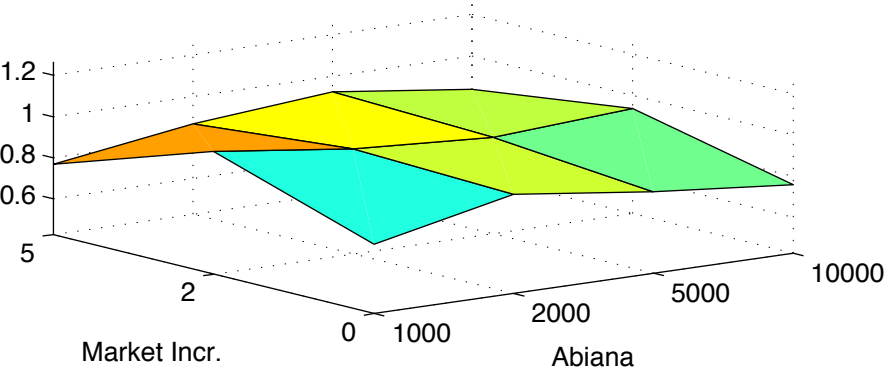


Inlet Costs 1000000, Local Costs 1000000

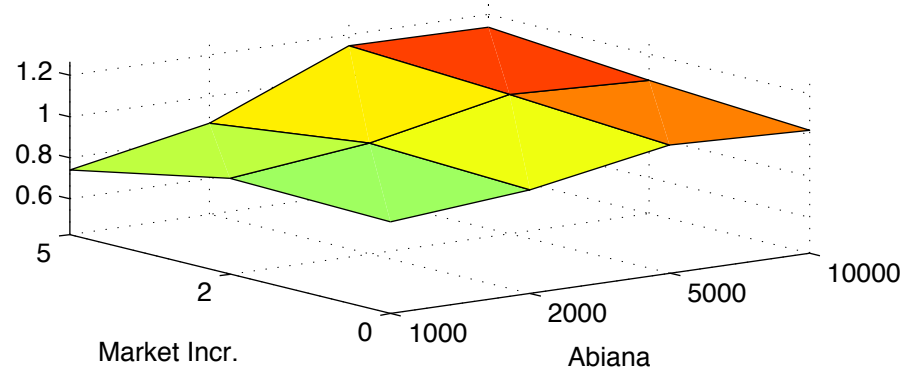


Income Diversity – Number of Channels1, with 24 Farms per channel

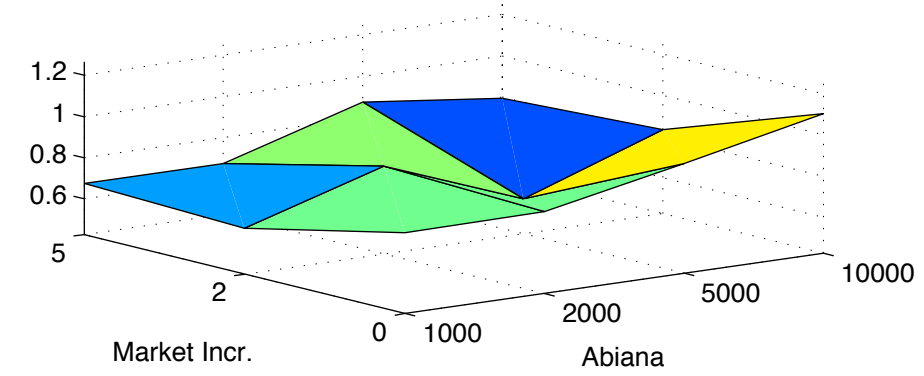
Inlet Costs 200000, Local Costs 200000



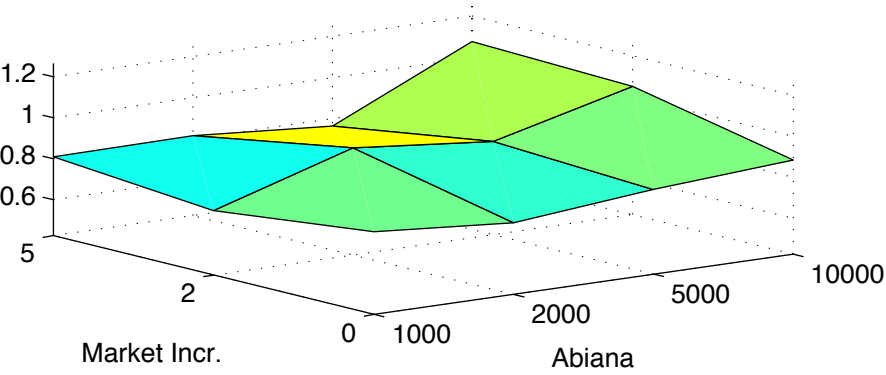
Inlet Costs 500000, Local Costs 200000



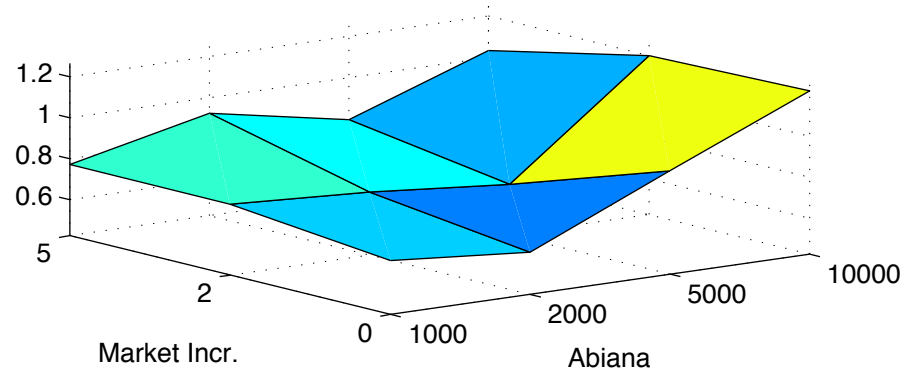
Inlet Costs 1000000, Local Costs 200000



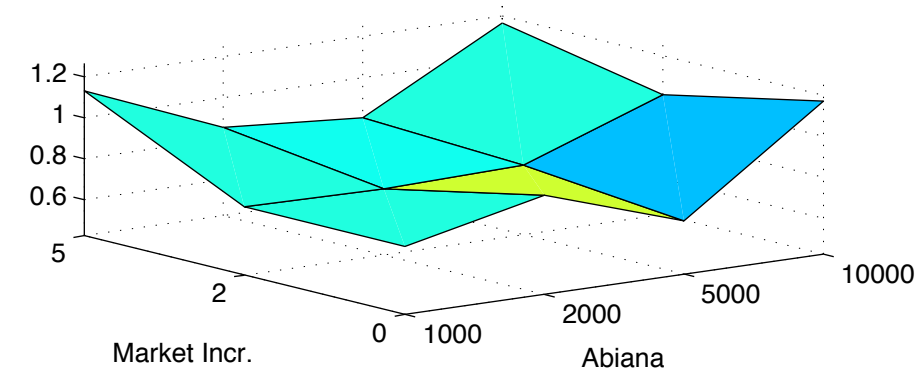
Inlet Costs 200000, Local Costs 500000



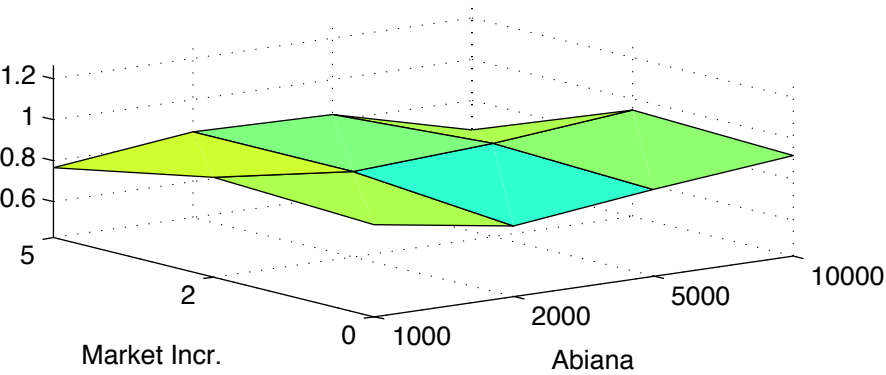
Inlet Costs 500000, Local Costs 500000



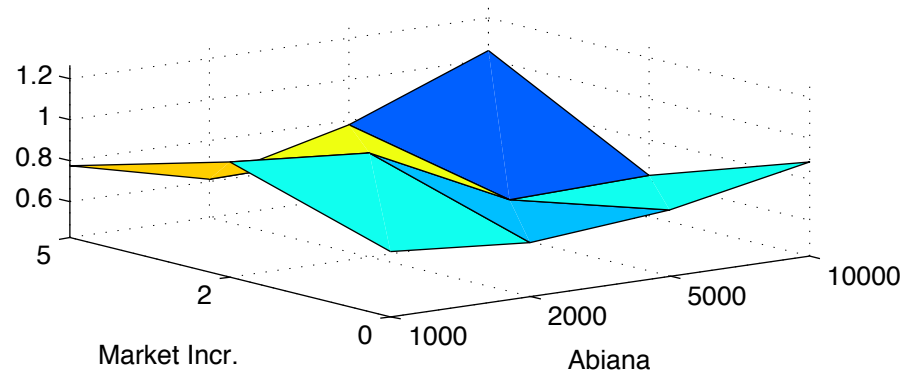
Inlet Costs 1000000, Local Costs 500000



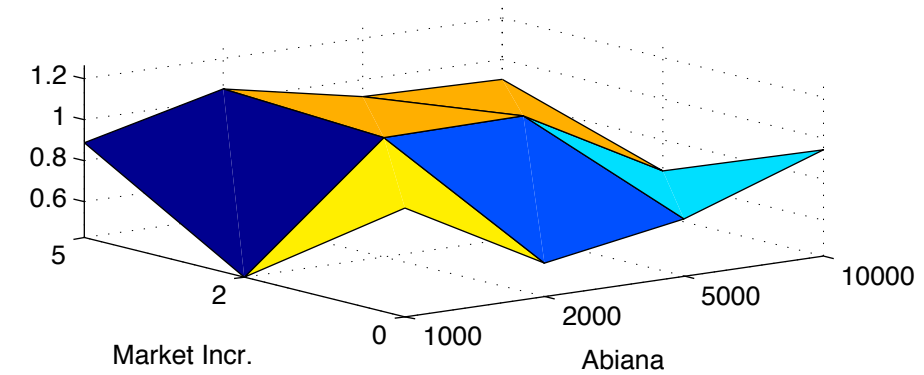
Inlet Costs 200000, Local Costs 1000000



Inlet Costs 500000, Local Costs 1000000

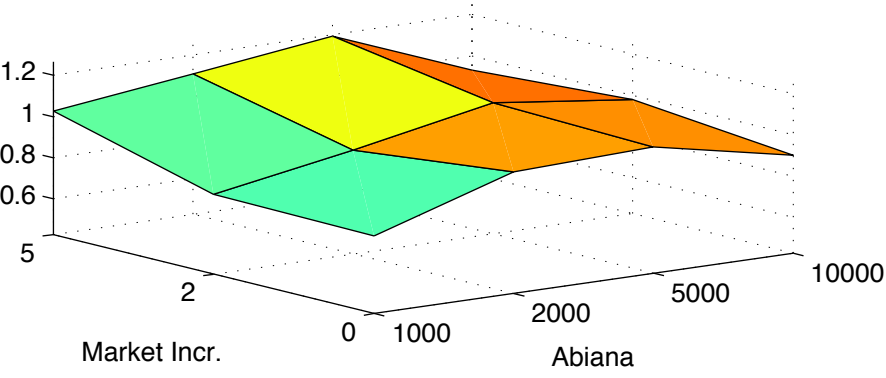


Inlet Costs 1000000, Local Costs 1000000

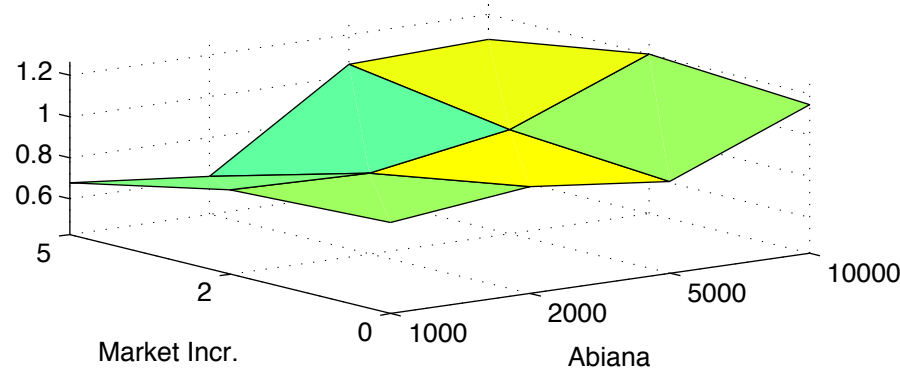


Income Diversity – Number of Channels 2, with 12 Farms per channel

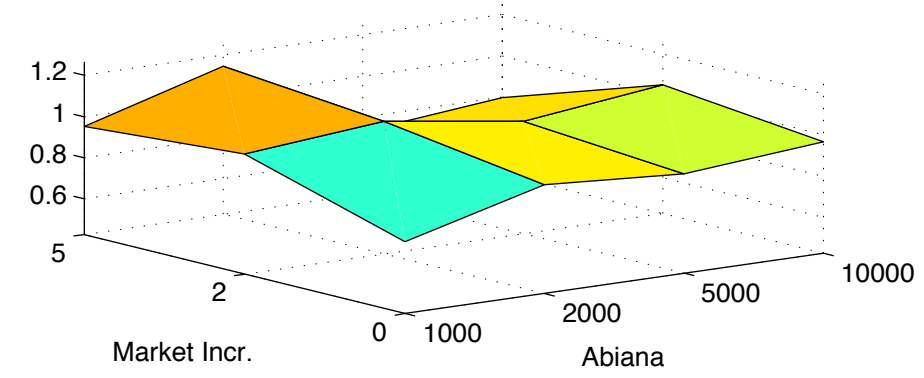
Inlet Costs 200000, Local Costs 200000



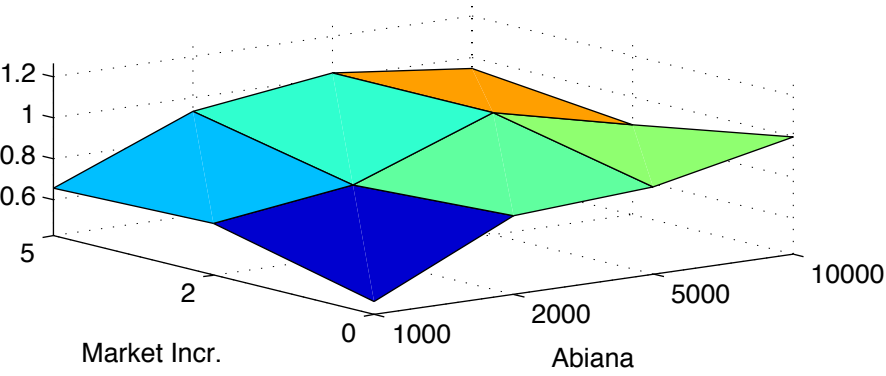
Inlet Costs 500000, Local Costs 200000



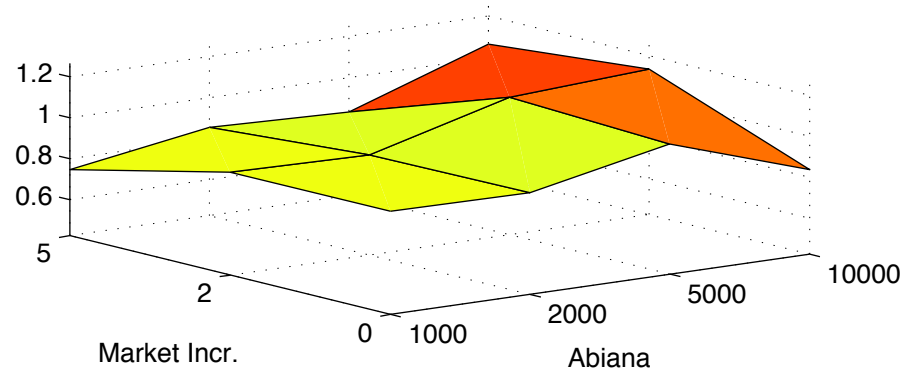
Inlet Costs 1000000, Local Costs 200000



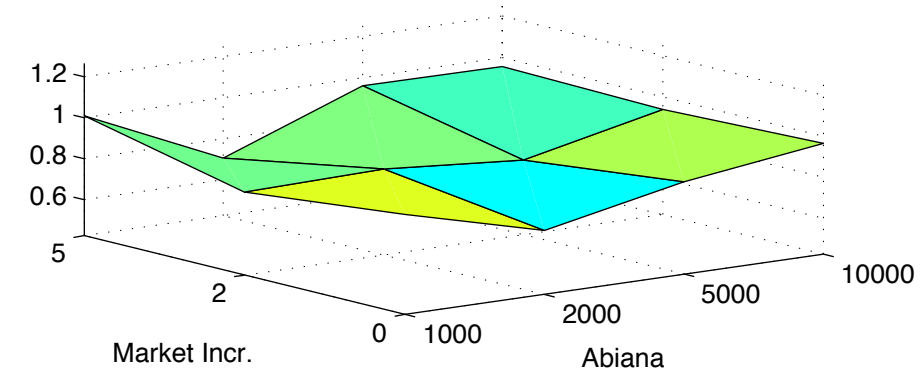
Inlet Costs 200000, Local Costs 500000



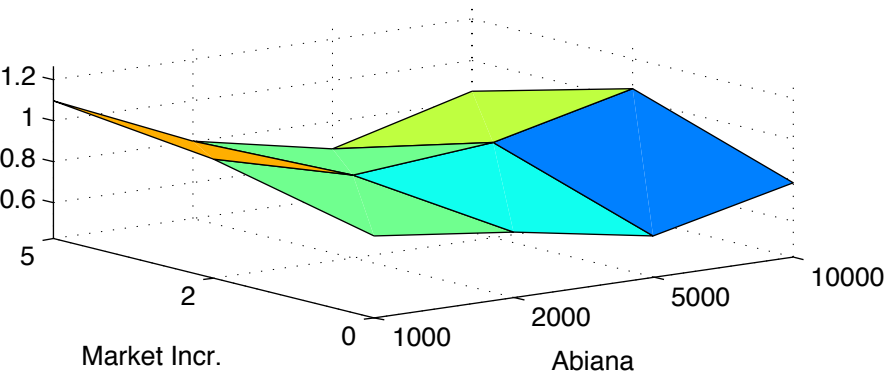
Inlet Costs 500000, Local Costs 500000



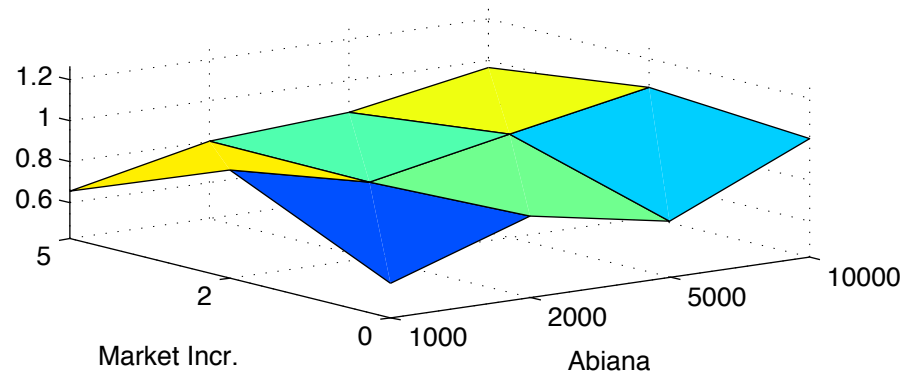
Inlet Costs 1000000, Local Costs 500000



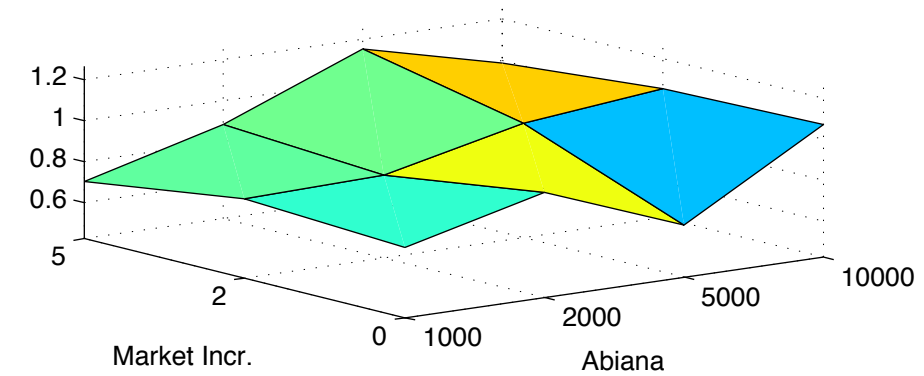
Inlet Costs 200000, Local Costs 1000000



Inlet Costs 500000, Local Costs 1000000

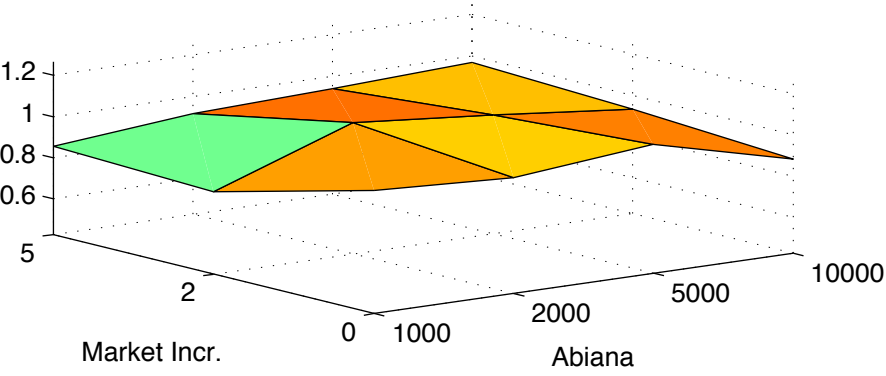


Inlet Costs 1000000, Local Costs 1000000

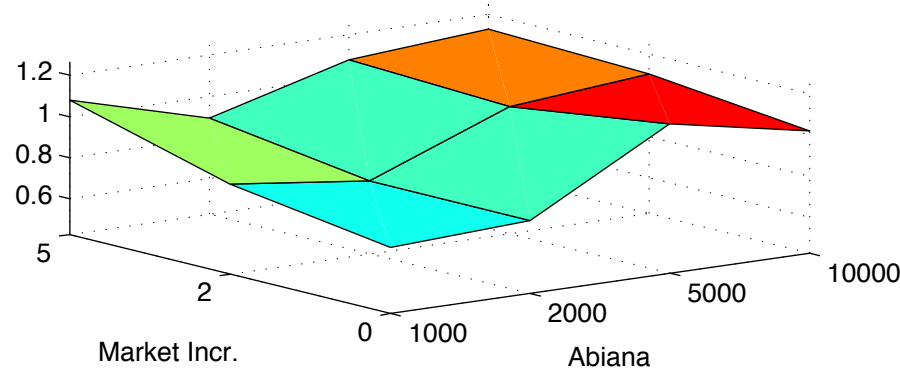


Income Diversity – Number of Channels 3, with 8 Farms per channel

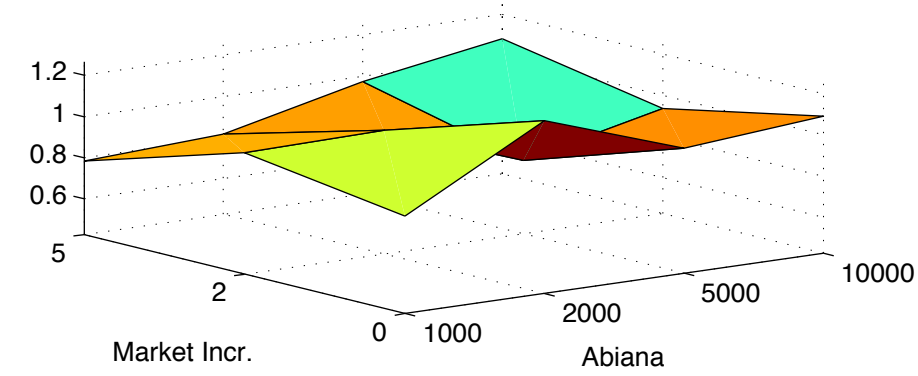
Inlet Costs 200000, Local Costs 200000



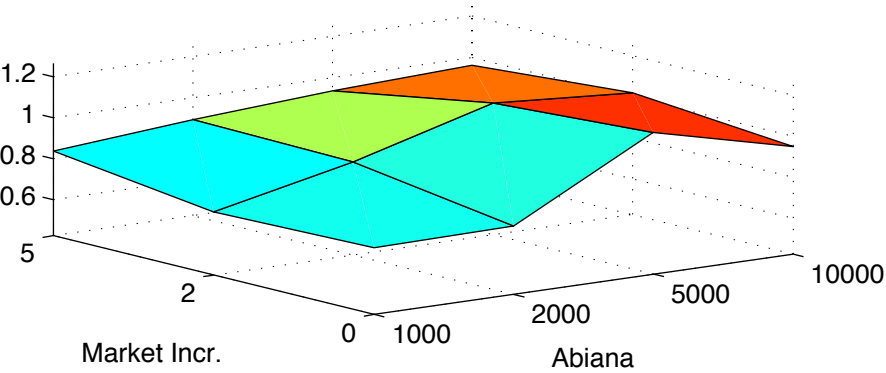
Inlet Costs 500000, Local Costs 200000



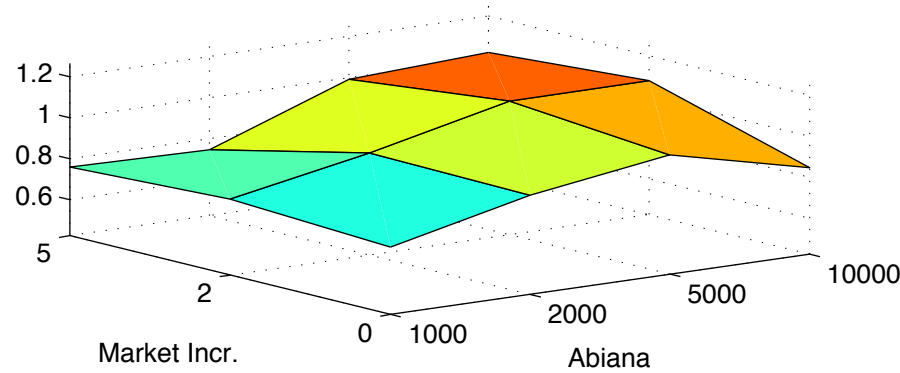
Inlet Costs 1000000, Local Costs 200000



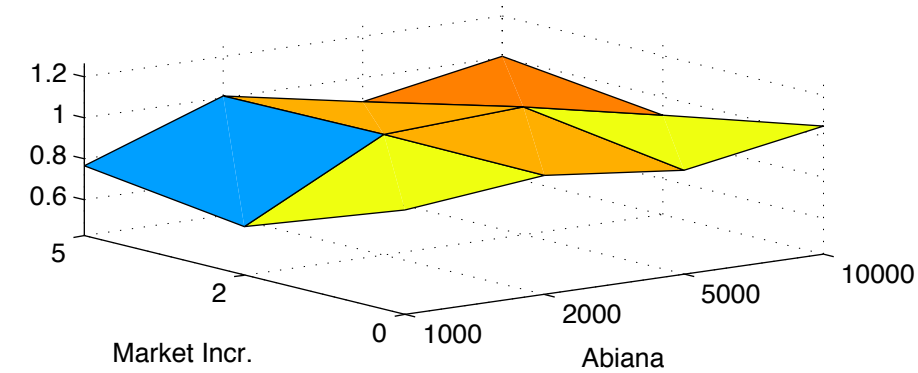
Inlet Costs 200000, Local Costs 500000



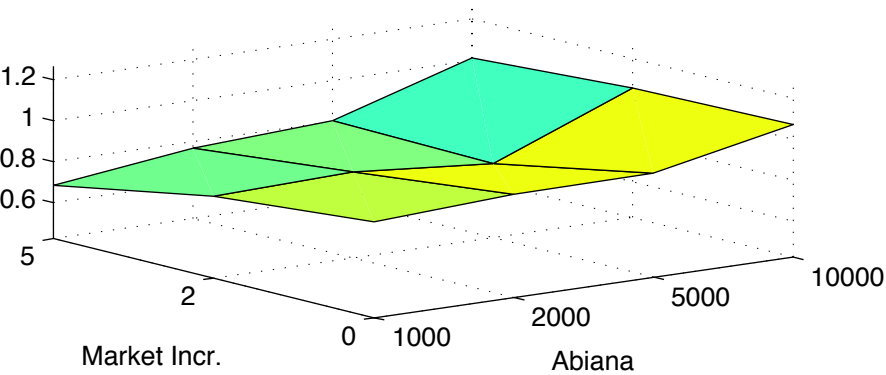
Inlet Costs 500000, Local Costs 500000



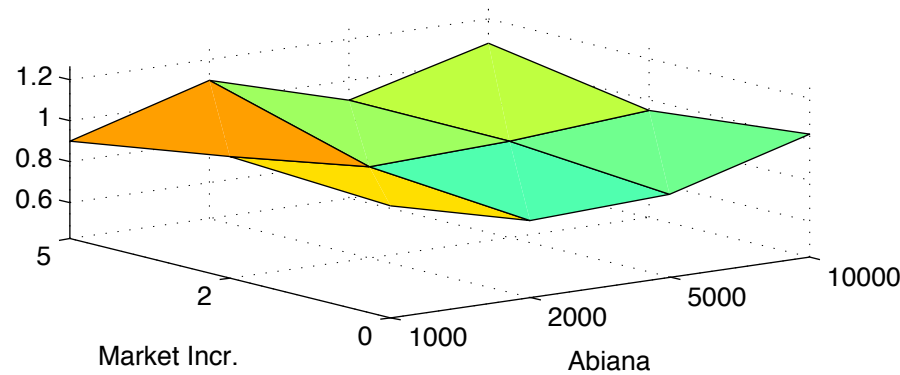
Inlet Costs 1000000, Local Costs 500000



Inlet Costs 200000, Local Costs 1000000



Inlet Costs 500000, Local Costs 1000000



Inlet Costs 1000000, Local Costs 1000000

