

Appendix 4: Goodness of fit

In ERG models, goodness of fit is essential for whether or not the model results can be interpreted (Hunter et al. 2008). The figures below (A4.1, A4.2) show goodness of fit information for the two models presented in the paper. The thick line shows the p-value for the empirical data compared to box-plots from 1000 simulations. The relative approximation of the empirical data by the simulations show that the models converged well and the results can be interpreted.

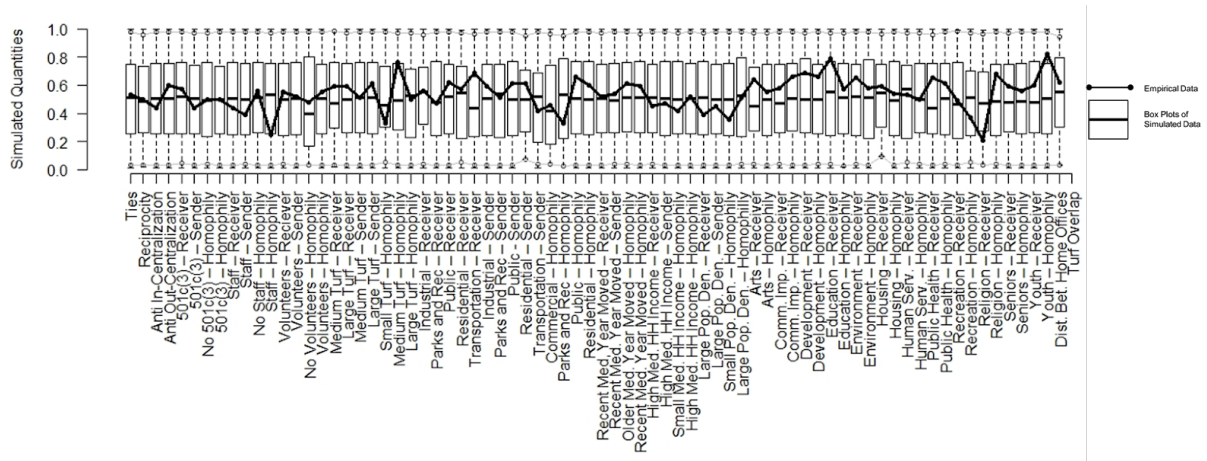


Figure A4.1: Goodness of Fit for Philadelphia

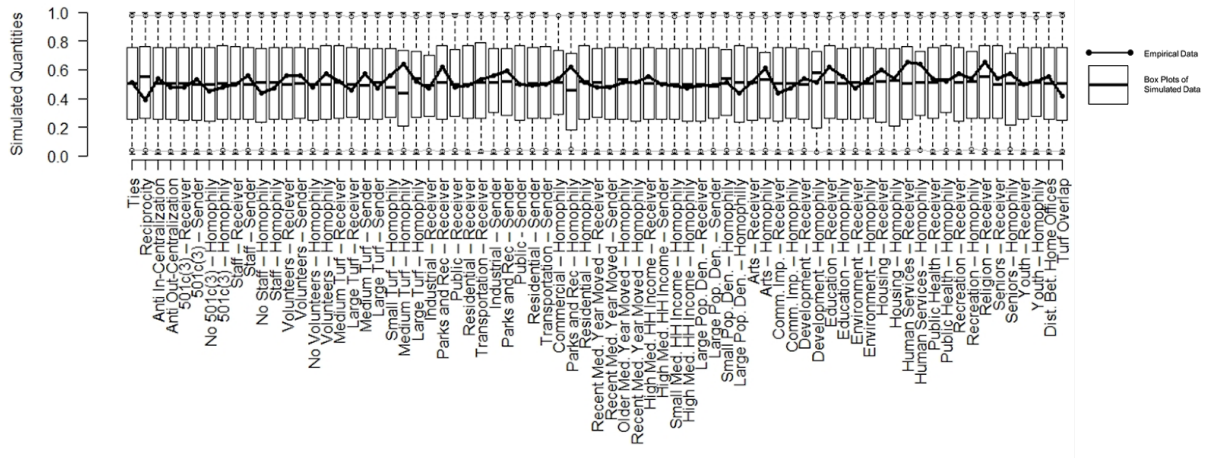


Figure A4.2: Goodness of Fit for New York

References:

Hunter, D. R., Goodreau, S. M., and M. S. Handcock. 2008. Goodness of fit of social network models. *Journal of the American Statistical Association* 103(481):248-258