

Appendix 1. Percentage change of MCP of transboundary fisheries of North America for end-century (2081–2100) relative to 2005–2014 under high and low emission scenario.

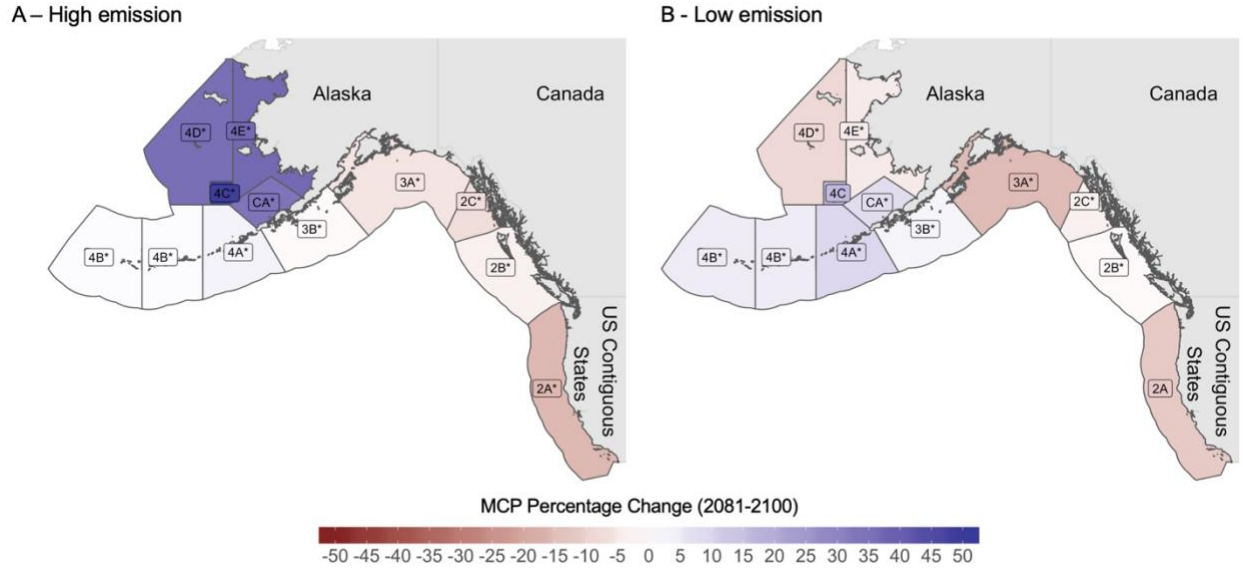


Fig. A1.1. Percentage change of MCP for species managed by the IPHC for end-century (2081–2100) relative to 2005–2014 under a (A) high emission scenario and (B) low emission scenario. Labels marked with "*" represent regions where models do not agree in direction of change.

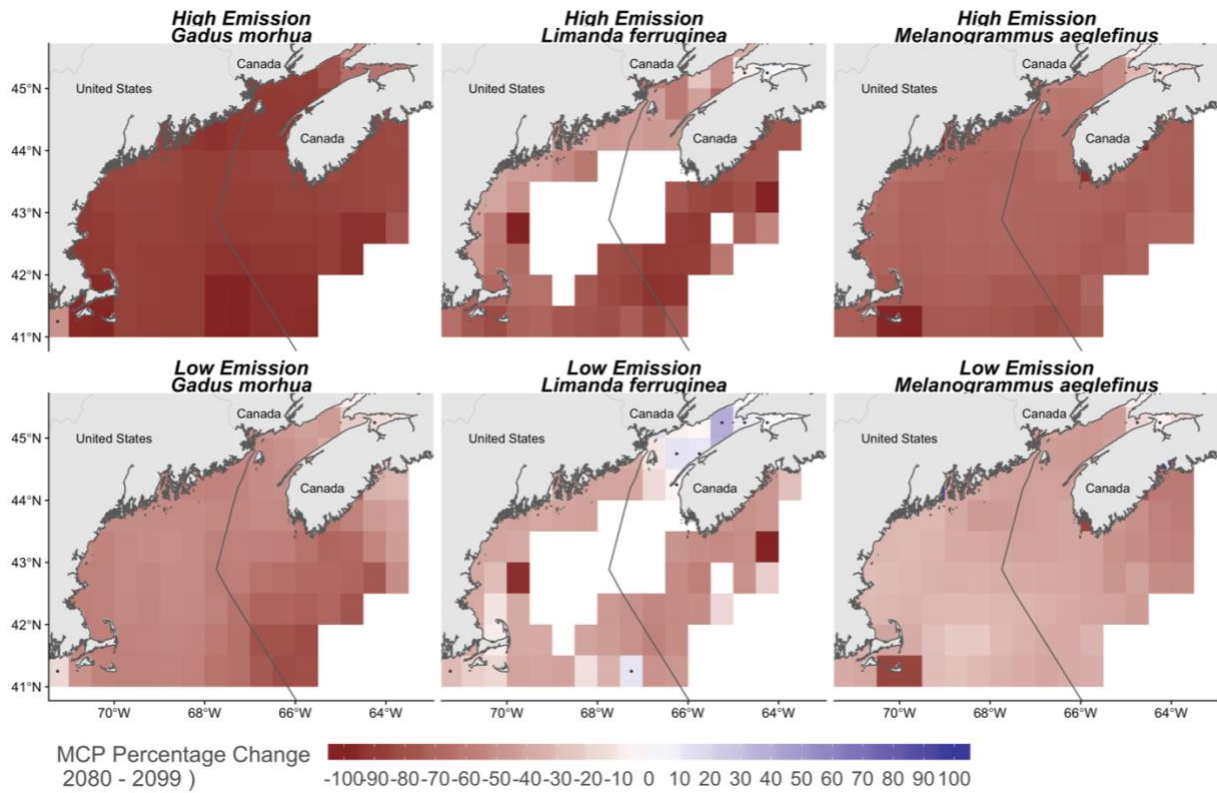


Fig. A1.2. Percentage change of MCP in the Gulf of Maine under (RCP 8.5) high emission scenario and (RCP 2.6) low emission for end-century (2080–2100) relative to present (2005–2014). Values represent the mean of 3 ESM. Points represent regions where ESMs do not agree in direction of change