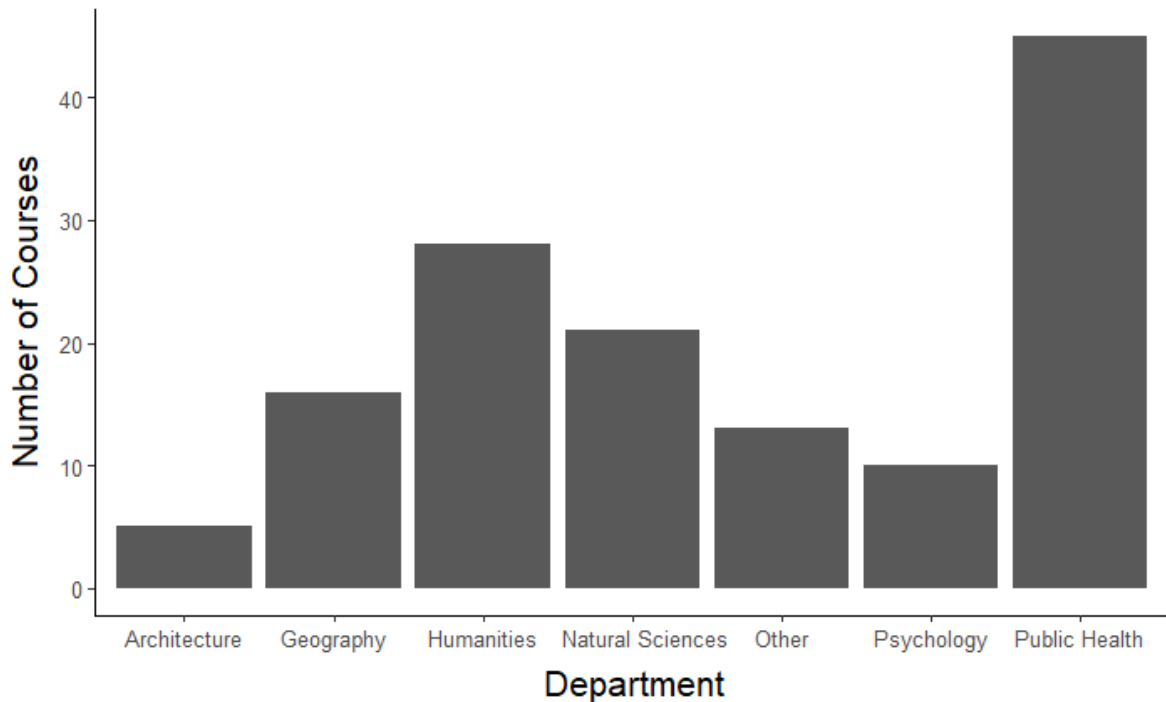


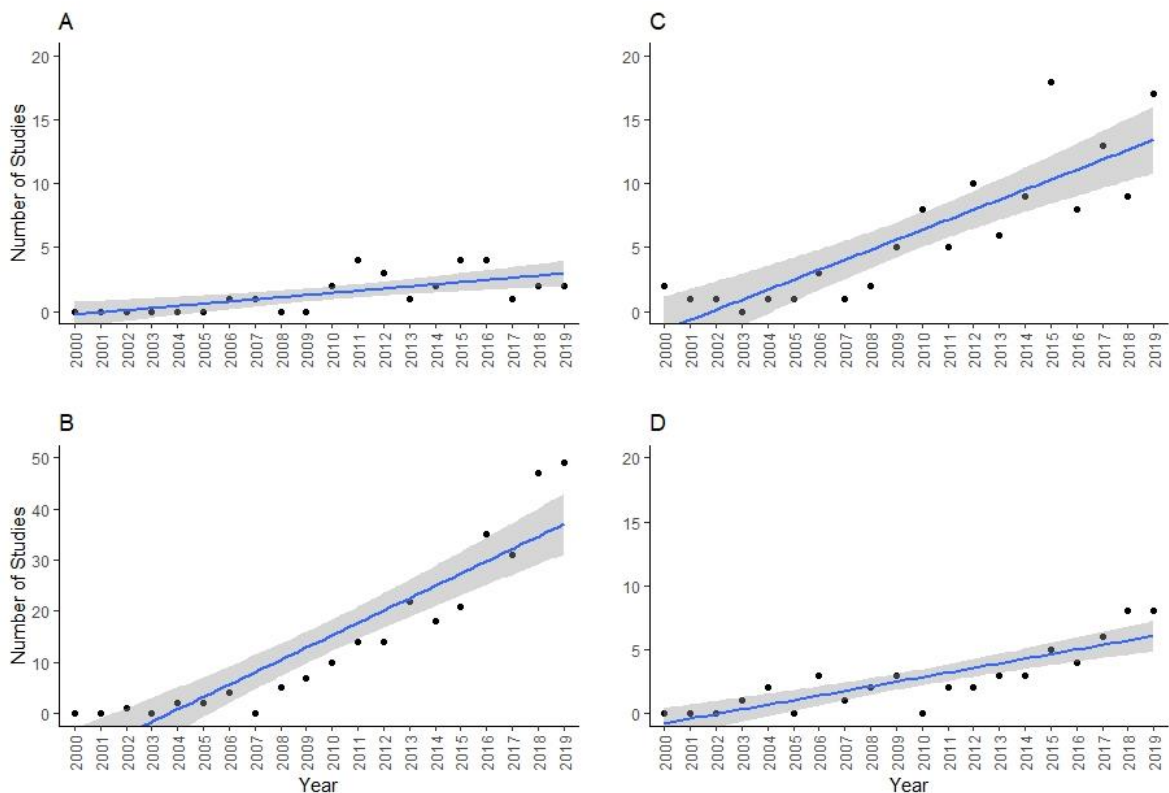
**Appendix 2:** Supplementary table and figures for the manuscript.

**Table A2.1.** Disaster-related educational and professional development events from conference programs including symposia, workshops, oral sessions, plenary sessions, special sessions, and contributed talks between 2000 and 2019.

<b>Conference Name</b>	<b>Number of Years Surveyed</b>	<b>Total Number of Hits</b>	<b>Average Number of Hits</b>	<b>Standard deviation</b>
Association for the Sciences of Limnology and Oceanography	20	165	8.25	10.7
The Society for Integrative and Comparative Biology	18	58	3.22	2.69
Botanical Society of America	17	34	2	2.09
Association for Tropical Biology and Conservation	16	78	4.88	4.91
The Ecological Society of America	11	285	25.9	12.7
American Fisheries Society	10	209	20.9	15.8
International Biogeography Society	9	15	1.67	1.66
Coastal and Estuarine Research Federation	6	125	20.8	15.9
British Ecological Society	6	5	0.833	2.04
TOTAL		974	48.05	45.358



**Figure A2.1:** Number of disaster-related course offerings per department, based on sampled universities that had courses relating to disasters (n = 68).



**Figure A2.2:** Number of disaster-related papers with community-engaged research frameworks or methodologies for the disciplines of ecology (A), psychology (B), public health (C), and economics (D). Each plot has fitted linear regression lines, with shaded areas representing 95% confidence intervals.