

Appendix 4. Estimated mean number of occupied California Spotted owl (*A; Strix occidentalis occidentalis*), Northern goshawk (*B; Accipiter gentilis*), and female Pacific marten (*C; Martes caurina*) territories for each management scenario from year 1 to 100. Mean estimates for each time step utilized replicates 1-10. Areas include the entire Lake Tahoe Basin (LTB) and the Lake Tahoe West project area (LTW). Standard errors for each mean territory estimate are in parentheses.

California Spotted owl

Mngmnt Scenario	Area	Average Number of Occupied Suitable Territories per Time Step											
		1	20		40		60		80		100		
Scenario 1	LTB	20	29.7	(0.5)	44.7	(0.2)	40.8	(0.4)	39.4	(0.3)	27.6	(0.3)	
	LTW	8	10.8	(0.2)	15.6	(0.1)	15.1	(0.2)	15.3	(0.2)	11.3	(0.1)	
Scenario 2	LTB	20	27.2	(0.3)	40.5	(0.2)	38	(0.3)	37.8	(0.3)	26	(0.2)	
	LTW	8	10.2	(0.3)	14.7	(0.1)	14.6	(0.2)	14.7	(0.1)	11.5	(0.1)	
Scenario 3	LTB	20	22.8	(0.2)	30	(0.4)	30.4	(0.3)	33.2	(0.4)	21.9	(0.6)	
	LTW	8	9	(0.1)	11.2	(0.3)	12.4	(0.2)	13.6	(0.1)	10.1	(0.2)	
Scenario 4	LTB	20	28	(0.4)	40.5	(0.3)	37.5	(0.6)	36.6	(0.2)	25.6	(0.3)	
	LTW	8	10.6	(0.2)	14.4	(0.2)	14.8	(0.1)	14.5	(0.2)	14.6	(0.2)	
Scenario 5	LTB	20	33.4	(0.3)	32.5	(0.3)	27.3	(0.3)	25.5	(0.4)	8.1	(0.3)	
	LTW	8	12.6	(0.2)	11.5	(0.1)	10.7	(0.2)	10.1	(0.3)	14.1	(0.2)	

Northern goshawk

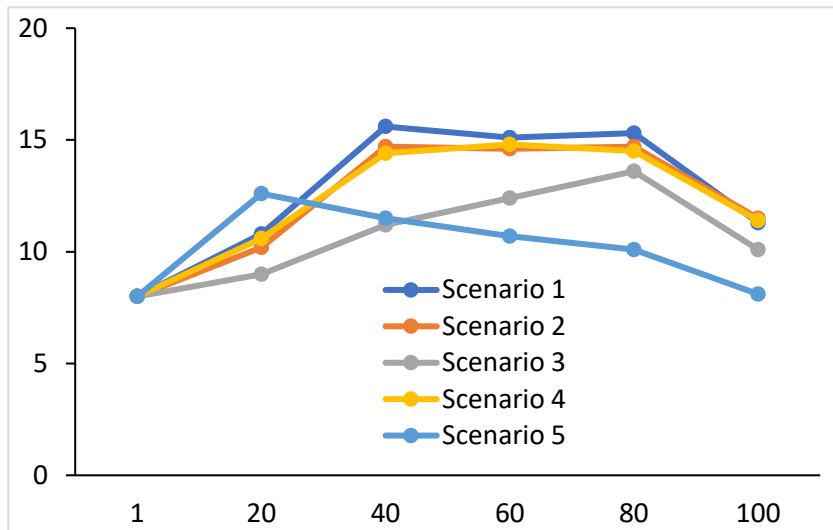
		Average Number of Occupied Suitable Territories per Time Step										
Mngmnt Scenario	Area	1	20		40		60		80		100	
Scenario 1	LTB	26.9	28.2	(0.1)	31.9	(0.1)	34.9	(0.1)	31.4	(0.3)	33.5	(0.4)
	LTW	8.4	8.8	(0.1)	9.8	(0.1)	10.7	(0.1)	10.1	(0.1)	10.4	(0.2)
Scenario 2	LTB	26.9	30.3	(0.7)	32.1	(0.2)	34.0	(0.1)	31.9	(0.2)	34.2	(0.4)
	LTW	8.4	9.4	(0.2)	9.7	(0.5)	10.5	(0.1)	10.1	(0.1)	10.6	(0.1)
Scenario 3	LTB	26.9	27.4	(0.1)	31.2	(0.1)	33.3	(0.1)	32.6	(0.1)	34.2	(0.5)
	LTW	8.4	9.0	(0.1)	9.6	(0.1)	10.2	(0.1)	10.4	(0.1)	10.6	(0.2)
Scenario 4	LTB	26.9	28.2	(0.1)	31.5	(0.1)	33.4	(0.1)	31.3	(0.1)	32.0	(0.2)
	LTW	8.4	9.0	(0.1)	9.7	(0.1)	10.3	(0.1)	9.9	(0.1)	10.4	(0.1)
Scenario 5	LTB	26.9	56.1	(0.2)	58.9	(0.2)	57.9	(0.2)	37.7	(0.2)	56.6	(0.3)
	LTW	8.4	18.8	(0.1)	18.1	(0.1)	17.8	(0.1)	11.9	(0.1)	18.4	(0.1)

Female Pacific marten

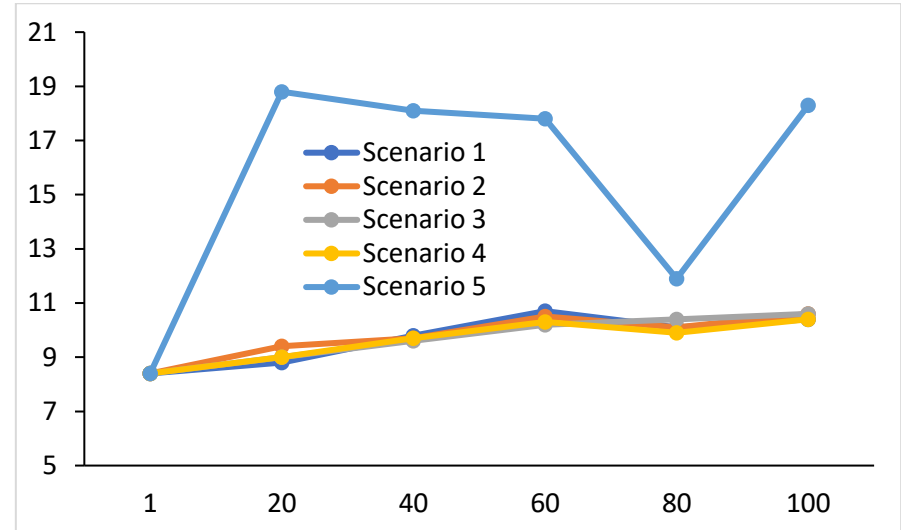
Scenario	Area	Average Number of Occupied Territories per Time Step										
		1	20		40		60		80		100	
1	LTB	65.1	85.2	(0.3)	98.7	(0.2)	107.3	(0.6)	112	(0.3)	114.3	(0.3)
	LTW	22.4	29.6	(0.1)	34.5	(0.1)	36.7	(0.3)	37.9	(0.1)	36.2	(1.1)
2	LTB	65.1	87.7	(0.3)	100.7	(0.3)	106.5	(0.3)	114	(0.3)	116.2	(0.3)
	LTW	22.4	32.9	(0.1)	36.3	(0.1)	36.5	(0.1)	38.7	(0.2)	38.7	(0.2)
3	LTB	65.1	97.7	(0.7)	106.0	(0.3)	114.9	(0.4)	108	(0.3)	117.6	(0.4)
	LTW	22.4	34.8	(0.2)	37.4	(0.1)	36.0	(0.2)	39	(0.2)	39.3	(0.2)
4	LTB	65.1	85.9	(0.3)	102.4	(0.3)	108.5	(0.3)	115	(0.4)	117.8	(0.3)
	LTW	22.4	32.3	(0.1)	36.4	(0.1)	36.5	(0.1)	38.3	(0.2)	38.8	(0.2)
5	LTB	65.1	75.0	(0.3)	90.3	(0.4)	93.4	(0.3)	92.9	(0.3)	84.1	(0.4)
	LTW	22.4	28.2	(0.1)	32.1	(0.2)	31.4	(0.1)	30.9	(0.2)	27.7	(0.2)

Figure A4-1. Trends in the estimated number of occupied California spotted owl (A; *Strix occidentalis occidentalis*), Northern goshawk (B; *Accipiter gentilis*), and female Pacific marten (C; *Martes caurina*) territories for each management scenario from year 1-100 for the Lake Tahoe West project area. Standard error bars were not included because they were all small, ranging from 0.2 to 1.4.

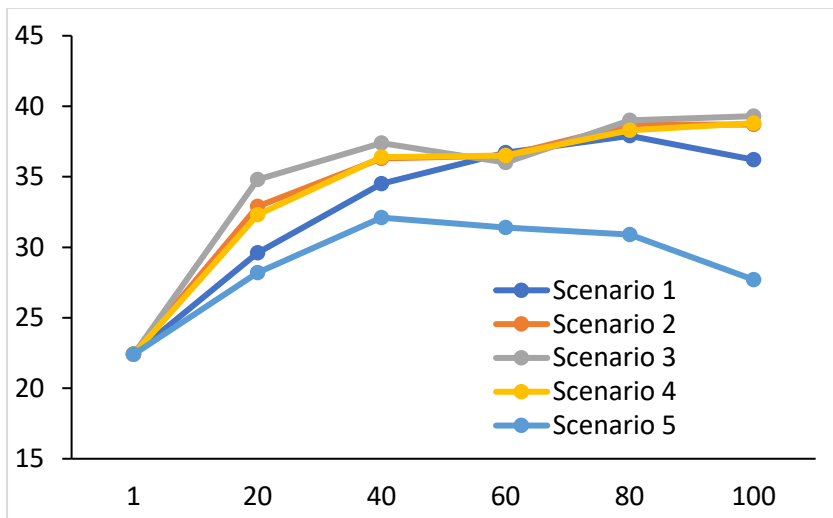
A. Lake Tahoe West: spotted owl



B. Lake Tahoe West: goshawk



C. Lake Tahoe West: female marten



Years of Landis Simulation of each Management Scenario

Estimated Number of Occupied Territories